

THE LYMINGE NEWSLETTER

For the communities of LYMINGE, ETCHINGHILL, RHODES MINNIS and POSTLING

<http://www.lyminge.org.uk/>

February 2016

Produced by
THE LYMINGE ASSOCIATION

News from The Lyminge Association

Things To Do, Plans To Be Made.....

- **Stream Clean** - set for 10am Saturday 19 March. We'd welcome all the help we can get. Last autumn, we attracted good support from a wide range of adults and children and hope that a similar response will be possible this time. Don't forget your wellies, rakes, gloves...etc.
- **April Garage Safari** - Saturday 16th April - this has always proven to be a great way to help clear items no-longer wanted or needed, as well as raising some unexpected cash. Full details in March edition.
- **Queen's 90th Birthday celebrations:** On Thursday 21st April 2016, Her Majesty The Queen celebrates her 90th Birthday, and in celebration of this wonderful milestone, beacons will be lit that night across the United Kingdom, including our beacon in Lyminge. More details next month.

Etchinghill Residents Association. is arranging a "Queens Birthday Party" on or about the 12th June.

On Saturday 16th July, Lyminge Association will be putting on a full day's celebration of the Queen's birthday in Tayne Field - a fun day of events and side shows for the whole family, with the emphasis being on the word "FUN". Over the coming months, we'll highlight particular events to whet your appetite and help you in your planning - e.g. plan and make a cart with at least two wheels to carry one person around a set course.



MANOR
VETERINARY CLINIC

Our **Lyminge Surgery** at the **Tayne Centre, Church Road** offers veterinary consultations on Monday, Wednesday and Friday afternoons from 16.00 to 18.00. Please call the Folkestone branch (see below) to book appointments.

Consultations in **Folkestone** are Monday to Friday, Saturday mornings by appointment and Sundays for a walk-in clinic. Our Folkestone surgery is our main site and includes full diagnostic and surgical facilities.

Veterinary and nurse consultations are held daily (except Sundays). Surgical procedures may be booked every weekday morning.

**For all appointments please telephone
01303 273203**

www.manorveterinaryclinic.co.uk



LYMINGE PARISH CHURCH SERVICES & ACTIVITIES

Church Website: www.lymingechurch.co.uk

E-mail: office@lymingechurch.co.uk

Wed 3 rd Feb	7.00pm	Holy Communion (<i>short said</i>)
	7.30pm	Open House Bible Study & Discussion (<i>Coffee served from 7.20pm</i>)
Sun 7 th Feb	8.00am	Holy Communion (<i>said</i>)
	11.00am	WOW (Ways of Worship)
Wed 10 th Feb	7.00pm	Ash Wednesday Service
		Holy Communion with imposition of Ashes
		NO Open House Bible Study
Sun 14 th Feb	8.00am	Holy Communion (<i>said</i>)
	11.00am	Sung Eucharist
Wed 17 th Feb	7.00pm	Holy Communion (<i>short said</i>)
	7.30pm	Open House Bible Study (<i>Coffee served from 7.20pm</i>)
Sun 21 st Feb	11.00am	Family Communion
	6.00pm	Evensong
Wed 24 th Feb	7.00pm	Holy Communion (<i>short said</i>)
	7.30pm	Open House Bible Study (<i>Coffee served from 7.20pm</i>)
Sun 28 th Feb	8.00am	Holy Communion (<i>said</i>)
	11.00am	Sung Eucharist

Messy Church

Please note that due to family circumstances, the person running this is unable to carry on at present.

With no other help forthcoming, we have had to suspend Messy Church for the time being.

If anyone is willing to take this on please contact

Rev Peter Ashman on 862432

(please leave a message on the answer phone if Peter is unavailable)

Confirmation Classes 2016

We are hoping to run a course for adults/teenagers this year.

The course will be 6 to 8 weeks long

and open to anyone over the age of 13yrs.

If you would like to be confirmed and are interested in attending these classes please let Rev Peter Ashman know as soon as possible

Telephone the Rectory on 862432

ACTIVITIES THIS MONTH

Mothers Union

Wednesday 10th Feb 10.30am In the lounge at Nailbourne Court

New members are always welcome

Why not come and give this a try

Please contact Sue on 862221 for details

Coffee Morning in Wentworth Close Lounge

Wednesday 17th February from 10.00am to 11.30am

In the lounge at Wentworth Close (entrance via the car park)

Please contact Lynne on 863010 or Laraine on 863216

Prayer Shawl Knitting Group

Wednesday 17th February from 2.30pm at 26 Nailbourne Court

This group meets to pray and knit shawls for

those suffering from ill health or bereavement

Please contact Madelaine 863582 if you are interested in joining

Ethelburga Luncheon Club

Thursday 18th Feb meeting at 12.00 noon at the Coach and Horses

Please contact Lynne 863010 if you are interested and/or need transport

PADDLESWORTH PARISH CHURCH SERVICES

Sun 7 th Feb	NO SERVICE
Sun 14 th Feb	9.30am Holy Communion
Sun 21 st Feb	NO SERVICES
Sun 28 th Feb	6.00pm Evensong

LYMINGE METHODIST CHURCH

Visitors are very welcome to join us at our weekly service at **11am** and invited to share fellowship afterwards with a cup of coffee/tea.

7 February - Rev. Derek Hancock (incl. Holy Communion)

14 February - Mr. Colin Pearson

21 February - Mr. Richard Blackwell

28 February - Mr. Paul Missin

RHODES MINNIS CHURCH

This small Chapel in beautiful countryside holds a weekly Sunday Service normally at 9.30am followed by coffee and biscuits. A warm welcome is extended to any visitors.

7 February - Mr. Ralph Bradshaw

14 February - Mr. Colin Pearson

21 February - Rev. Kevin Taylor (incl. Holy Communion)

28 February - Deacon Carys Woodley

A five-week Lent Course will be held on Thursdays at 2.30pm commencing Feb.18. All welcome

POSTLING CHURCH SERVICES

7 February 3.30pm Evensong

14 February 9.30am Family Service

21 February 8am Holy Communion

28 February 9.30am Family Communion

CHRISTIANS IN LYMINGE

Lent Lunches

Come and join us in the Rigden Room at the Tayne Centre for a lunch of soup, bread, cheese and fruit all for £3. The lunches will be held every Friday in Lent from 12th February to 18th March starting at 12 noon.

All profits will go to Water Aid

Lyminge Newsletter

Terms & Conditions. Copy deadline is 18th February

Please email your copy in to the editor (pb@pbarnes20.plus.com). Your payment must be received before your article or advert can appear in the Newsletter. Please leave your payment along with your name, organisation, telephone number and copy of your ad in a sealed envelope at the Lyminge Post Office or at the Lyminge Library. Business adverts cost £9.50 per month or £95.00 per year. Personal and charity adverts and articles from £3 per month, or £30.00 per year. The annual rate offers 12 entries for the price of 10. Please make cheques payable to 'The Lyminge Association'. If you do not have email, a typed paper-copy can be left with the payment.

Lyminge Association accepts no liability for the accuracy of the advertisements or subsequent actions arising in conjunction with advertisers in the newsletter.

Further details from Peter (editor) on 01303 863737

News from Age UK Lyminge...

Age UK is the place, right on your doorstep, to come for good company, stimulating activities and friendly conversation.

How about trying your hand at art? Don't worry if you've never done anything remotely "arty" in the past – our teacher, Pauline, will give you lots of ideas and guidance. Many of the group, who meet on a Tuesday morning at 10.45am, only discovered the pleasure of painting and drawing recently and they are keen to share their enthusiasm with new people. Or how about joining our Relaxation sessions on Monday mornings at 10.45am? They are a great way to help your body and mind wind down and forget any worries.

Why not come for a morning activity and stay for one of our delicious hot two course lunches? Activities cost £2.20 per session and lunches are £4.80. If you need transport, we can bring you for the whole day (including all activities, lunch and transport) for £11. Just call 01303 269602 to book.

We are planning a series of swimming sessions at the fully accessible Folkestone Sports Centre pool. We'll provide transport and support. Dates to be arranged subject to interest so please call 01303 269602 to get on the waiting list.

Coach Holiday in Eastbourne – a four night stay in a hotel near Eastbourne pier. £299 per person pays for coach travel with pick-up from Age UK, dinner, bed & breakfast, day-time excursions and evening entertainment in a twin / double room (sorry no singles available). Call 01303 269602 to book.

Volunteers we need new volunteers to help sort our shop stock on Wednesdays, Thursdays and Fridays between 1.30 and 3.45pm.

Friends – if you don't have time to help us regularly in the centre, could you spare time occasionally to help with fundraising activities and events? There will be a meeting for anyone interested in the Lyminge centre on Tuesday 9th February at 1.30pm. Come along to find out more. If you are interested but can't make the meeting please contact Cathy on 01303 269602 or email mfo@ageukhl.org.uk.

For more information about any of our events or services please call 01303 269602 or email co@ageukhl.org.uk or come and say hello in person – we are at Everist Court, Station Rd, Lyminge, CT18 8HQ. Full information available at www.ageuk.org.uk/hytheandlyminge (including daily menus for the next two weeks) and you can find us on Facebook (AgeUkHytheandLyminge) and Twitter (@ageukhl)

Etchinghill Update February 2016**ETCHINGHILL RESIDENTS' ASSOCIATION**

Etchinghill Cinema Club is showing the film "SUITE FRANCAISE" (15) on Monday, 15th February, at the Etchinghill Village Hall, doors open at 7.00 for 7.30 pm start. Starring Michelle Williams, Kristen Scott-Thomas and Matthias Schoenaerts, this drama/romance is set during the German occupation of France in the 1940's and tells the story of Lucille Angellier as she awaits news from her husband, a prisoner of war. As Parisian refugees pour into their small town, followed by a regiment of German soldiers, Lucille's life is turned upside down.

There will be a **litter pick** to coincide with the 'Clean for the Queen' weekend on Saturday 5 March at 10 am. We will meet at the village hall and all volunteers welcome.

The **E. R. A.** is hoping to arrange a "**Queens Birthday Party**" on or about the 12th June. This will include prizes for the best dressed "Queen" competition and other fun and laughter events. We will bring you more news later in the year but do put the date in your diary.

Consideration is being given to removing the **Wildlife Strip** and replacing it with a garden quadrant for wildlife.

ETCHINGHILL VILLAGE HALL

OPEN HOUSE: Held every Monday between 10.00 and 12.00pm. Do come along for a cup of coffee/tea, biscuits (cake if you are lucky!) and some good company. The speaker this month, on 15th February, will be Mr James Wilmot, with a talk entitled "I took a stroll through Hythe". Do come along for a stroll with him without having to get out of your chair. The talk will start at 10.30am. There will be a retiring collection in aid of the Pilgrims Hospice.

ETCHINGHILL VILLAGE MARKET: The Market is held on the first Saturday of the month. It starts at 10.00am Do come along and visit the stalls. Reasonably priced refreshments are available as well.

NEIGHBOURHOOD WATCH: Kent County Council Trading Standards is warning the public of fraudsters who are telephoning to tell them they are in the wrong council tax bracket and are owed a rebate of around £6,000. Scammers will ask for an up-front fee of around £65 in order to process the payment, but no rebate will be issued. You can check your council tax band for free by contacting the Valuation Office Agency.

If you wish to include anything in the Etchinghill Update please contact Barbara on 862873

District Councillors Report - February 2016

The Highways England Consultation on the two possible sites for a Lorry Park either side of Stanford finished on 25 January. Events were held in Sellindge, Folkestone, Hawkinge, Ashford and Dover. Additionally Shepway met with five parish councils and Folkestone, Hythe and Hawkinge Town Councils in order to raise awareness and to share information. We have taken part in as many of these events as we could possibly could as well as the filming of an Inside Out programme by the BBC at Stanford. Senior Officers have also attended Parish Council Meetings within the immediately affected area to hear local views on the proposals. Highways England is expected to announce the preferred option in February/March with consultation on the detailed scheme expected to commence in late March. This would allow a report on that consultation by the end of May and potentially a final decision by the Secretary of State in July/August 2016.

Following the Shepway District Council meeting on 13 January we are now able to share the news that just before Christmas the council completed the purchase of Otterpool Manor Farm near the village of Lympe. The 357 acres of farmland was bought for £5.2m including fees and the land will be tenanted and managed to give the council an income. Continuing reductions in grants from central government mean that the council must develop other sources of income and we believe this will help secure the financial viability of the council. Some people have been concerned that this might be part of the lorry holding area proposal. It is categorically not and any change of use would (unlike Highways England's plans) go through our normal democratic and planning processes.

Shepway Officers have been on call for flooding issues during this very wet period and have worked in conjunction with Kent Fire & Rescue and the Police. Approximately 600 filled sandbags were delivered by the Grounds Maintenance and Handymen team and approximately 300 empty sandbags were collected from the Civic Centre. Officers have visited properties throughout the District including many in our Ward giving support and supplying sandbags as necessary.

The Environment Agency reports that it has been monitoring groundwater levels in the Nailbourne catchment area and on 08 January levels were normal with no risk of groundwater flooding but there has been heavy rain since then. Their Floodline is 0345 988 1188 and you can register with them for flood alerts. There is also useful information on www.gov.uk/environment-agency

Susan Carey and Jenny Hollingsbee

Ward councillors for North Downs West, Shepway District Council

Jenny Hollingsbee (Jenny.hollingsbee@shepway.gov.uk 07887918458) **Susan Carey** (susan.carey@shepway.gov.uk 01303 670561)



Lyminge Dramatic Society

By the time you read this we will have cast our Spring Production: **Quartet**. This will be performed at the village hall in Lyminge at 7.45pm from 6th-9th April. This is a touching story about retired actors who live in a retirement home and how their lives are changed when someone from the past arrives. Put the dates in your diary.

The tickets will go on sale from Laing Bennett in March- more details in next month's newsletter.

If you would like to join our Society contact Liz our secretary on 01303 862748. Visit our website : lymingedramaticsociety.co.uk to find out more about our society.



Lyminge Friends

In January we heard from Derek Smith about *Life in the South Atlantic*. It was really interesting to hear about the Falklands War from someone who was actually there. Afterwards we went to the Coach and Horses for a really lovely lunch.

On Wednesday 3rd February we will have a talk entitled 30 years as a Hovercraft Pilot from Capt Brian Laverick-Smith which promises to be very interesting. Alan Haines makes a return visit on Wednesday 2nd March to talk about **A Swipe at the Seventies** while on the 28th March, we will meet for our regular Easter Monday Lunch in the Coach & Horses.

Meeting are 10.30 - 12.30 in the Rigden Room of the Tayne Centre. Entry is currently £2.00 and includes refreshments. We are a friendly social group and welcome new members so just drop into one of our meetings, or, if you'd like to talk to one of us first, please call 863500.

Rhodes Minnis Evening Circle

Our Christmas party was a great success with a Bring & Share supper, a lovely Raffle, and presents and cards for everyone. We were entertained by Maureen Jones who, along with her guitar, gave us a delightful rendition of her own amusing poems and songs, finishing with Christmas Carols. The competition was won by Pat Kent, with Marion Hoare 2nd and Ann Harris 3rd. We have raised £308.25p for our charity, Children in Need, including the October Coffee morning. There is no meeting in January, but on February 17th Alice Mills is giving us a taste of *"Living in Spain"*.

We meet at Rhodes Minnis Village Hall at 7.30pm and visitors will be made very welcome. For further details please contact Diana Bennett on 862134.

theWI

INSPIRING WOMEN

The President, Barbara Syrett, welcomed members to January's meeting and presented a birthday posy to Chris Marshall. Also, Gill Le Cras had received a birthday posy this month but was not present. Members were saddened to hear of June Manton and Pat Kent's illnesses and at the time of writing, June remains in the William Harvey hospital but Pat is home and recovering well.

The speaker for the afternoon was Rosemary Piddock, ably assisted by her husband John, who gave a very interesting talk about various women from the WW1 which included names like Edith Cavell, Marie Curie and Agatha Christie but she appropriately also told stories about Lady Denman. She was the first lady chairman of the National Federation of Women's Institutes and who Denman College, the Georgian house in Oxfordshire still being used regularly today for W.I. courses etc. was named after. It was a very enjoyable and informative afternoon.

The competition was for a memento from the first world war and this was won by Chris Marshall with Ann Morgan in second place. Tea was then served by the hostesses, Margaret Boulter and Daphne Andrews which gave a good time for a chat and the raffle was drawn.

Next meeting will take place in the village hall on Tuesday, February 16 at 2.30pm, there is no speaker but it will be a social afternoon and the competition will be for a Valentine object.

Visitors and new members are always welcome, if you require any further information, please contact Barbara Syrett on 01303 265229 or Rita Warner on 863503



Lyminge
Historical Society



Please note there is no talk in February

The first talk in 2016 will be on Tuesday 1st March
at 7.30pm at the Tayne Centre

The Tithe War in the Elham Valley 1931-1936

Speaker: Dr. John Bulaitis

New members and visitors are welcome.
Members: £10 per annum inclusive of talks
Visitors: £4 per person payable on the door.
Tea and biscuits will be served.

Please note: Lyminge: a History Pt 1-7 books
The special offer has been extended for the next few months.
You can get the bundle of all 7 books for just £30!!*
To take advantage of the offer please call 01303 862865
This offer is not available from the shops.
*Postage and packaging extra for postal deliveries

Lyminge Historical Society
Mobile Tel. No. 07759 260816
Website: www.lymingehistoricalsociety.co.uk

Rhodes Minnis Village Hall

Beetle Drive

Friday 26th February



at the Hall 7.30pm
Adults £2 – Children 50p
Teas, coffee and juice provided
There will also be a raffle
Come and join the family fun
New players welcome to come and join

ETCHINGHILL RESIDENTS' ASSOCIATION

Etchinghill Cinema Club

FILM SHOW

"SUITE FRANCAISE" 15

Monday, 15th February

Etchinghill Village Hall at 7.15 pm

Entrance Fee £5 per head

includes Membership

FREE Refreshments and Raffle



Lorraine 863333 for info

Music on a Friday

invites you to a

Musical Evening

of romantic songs for

Valentines' Weekend

Friday 12th February

7.30pm

St Mary and Ethelburga Church, Lyminge

Free Entrance Free Bucks Fizz Free Chocolates

Look Forward to Seeing You

Lyminge Weather Statistics – December 2015

With thanks to Mr D. Godden for these weather statistics and notes.

	Temperature (°C)	Air Pressure (hPa)	Wind Speed (mph)	Total Monthly Rainfall
Maximum	13.8 (19/12/15)	1034 (07-08/12/15)	35.0 S (29-30/12/15)	132.1mm (5.17 in)
Minimum	-0.7 (31/12/15)	1009 (07-08/12/15)	Highest Daily Rainfall	15.0mm (0.59in) (15/12/15)

A mild month, with moderate winds, and with four instances of night time temperature exceeding those in the day.

Weather Summary For 2015

	TEMPERATURE CELSIUS		BAROMETER millibars		RAIN mm		WIND -m/h
	Low	High	Low	High	Day	Month	Gust
JANUARY	-03.6	12.3	965	1031	35.0	244.6	W 45
FEBRUARY	-3.1	12.0	980	1028	24.0	70.0	SW 25
MARCH	-1.2	15.0	981	1035	7.0	40.5	NE 24
APRIL	-1.5	23.5	1004	1031	5.0	20.0	SE 26
MAY	3.1	22.3	995	1024	2.0	104.0	SW 30
JUNE	5.3	27.7	1001	1030	10.5	42.5	E 33
JULY	5.0	35.3	990	1022	65.0	137.7	SW 20
AUGUST	9.2	30.0	1010	1021	31.0	170.8	SE 28
SEPTEMBER	5.0	21.9	980	1036	22.0	140.8	SE 25
OCTOBER	3.0	19.2	996	1028	23.0	92.0	S 22
NOVEMBER	-0.5	23.7	993	1027	15.0	123.9	NW 37
DECEMBER	-0.7	13.8	1008	1034	18.3	132.1	S 35

So much has already been said about the weather in 2015, so I will confine myself to a local observation. Lyminge experienced the longest frost free period – from 7 April until 21 November – since 1969 when my records commence. Most years we have frost in the latter half of May.

Coach & Horses



Senior Citizens 2 course lunches available

Monday - Saturday £7.50

Friday Food Theme Nights £9.95 per person

5 February - Mexican

12 February - Italian

19 February - Indian

26 February - Polish

Sunday Carvery - £9.95

Served between 12 noon and 4pm

Valentine's 3 Course Hot Buffet Dinner £16.95 - Saturday

13th Feb 6-9pm with Live Music from Cultured Pearl from 8.30pm

Live Music! Saturday 27th February Marty Russell from 8.30pm

Bookings and Contact: 01303 862694

Park House Sanctuary Boarding Kennels & Cattery

Park House, Stelling Minnis CT4 6AN

Brick-Built Heated Kennels ~ Daily Walks

Reasonable Rates ~ All dogs must be fully inoculated

Heated Cat Chalets ~ Quiet Area Inspection Invited.

To book or for further information, call

01303 862622 or email lord.whisky@btinternet.com

www.lordwhisky.co.uk

THE ETCHINGHILL VILLAGE MARKET

All the stall holders along with the village hall trustees would like to thank everyone that has supported us throughout 2015.

We will be back on Saturday 6th February and look forward to seeing new and old faces once again.

Free tea and coffee vouchers will be available for everyone that spends £4 or more on any one stall.

ETCHINGHILL MARKET will still be the place to be.

Saturday 6th February 2016 from 10am

Plenty of free parking

For further details contact John on 863819. Charity No. 302736

Lyminge Fun Day 16th July 2016

To Celebrate
The Queen's 90th Birthday
in Tayne Field

**Enquiries Tel:
862699/863737**



PIANO LESSONS FOR ADULTS



Have you always wanted to learn to play the piano but have lacked the opportunity, or faith in your own ability? Did you learn as a child and now regret having given it up?

I specialise in teaching adults and have developed a method which will enable you to progress quickly and with great enjoyment.

Please contact: Lise Cribbin, Bridge 01227 637709

For Sale Mixed Seasoned Logs

Large truckload NOW £80

Free delivery

**Tree surgery/stump removal
also undertaken.**

Call 01227 709562

ELHAM VALLEY AND WYE LIONS CLUB

Thank-you for your support to our Christmas float in December. We collected £609 in Lyminge and £213 in Etchinghill, which after expenses, will be shared with Lyminge Youth Club and Sibton Park Cricket Club respectively, who helped us with the collections. Thanks also to those who helped collect.

On **27th & 28th February**, we will be collecting for Marie Curie at Tesco's in Ashford. If anyone would like to help with this, please call us on 0845 601 5212.



THE ROYAL BRITISH LEGION ELHAM VALLEY

Our next meeting will be held on Thursday 4th February at 7.30pm at Age UK Lyminge when our guest speaker will be Major (retd) John Bennett from the Princess of Wales Royal Regiment who will give his presentation entitled **"Life as a Cold War Warrior"** which charts the role of a reserve infantry unit reinforcing the British Army of the Rhine in the 70's/80's.

Everyone is welcome, including non-members. Free admission but donations are welcome for refreshments.

Susan Foster, Secretary

01303 862779, sjfos@fsmail.net



Adult Swimming with Hythe Aqua

- Can you swim lengths (25m)?
- Are you between 17yrs and 70yrs++++
- Do want to improve your swimming skills?
- Do you want to improve your fitness?

We can help you improve under the direction of our experienced Swimming Coaches. You may want to simply improve your swimming skills and fitness, or even take part in competitions such as Masters Swimming, Triathlons or Open Water – we can help. Two sessions available each week, starting session Fridays at 8.00pm – Hythe Pool.

To book your place phone: 01303 862353 or checkout our website: www.hytheaqua.org.uk



JUMBLE SALE Saturday 5th March 2016

1pm - 4pm

Elham Village Hall

Canterbury Road, ELHAM. CT4 6SX

Refreshments available: Tombola

All proceeds to:

HEADWAY EAST KENT-Head Injury Support

Registered Charity No. 1103215

For more information please contact:

Zoe: 01303 863830/07985952179

Ann: 01303 621971

"To educate a man in mind and not in morals is to educate a menace to society."

Theodore Roosevelt



THE TAYNE CENTRE



To celebrate the end of the renovation project, you are invited to join us:

'Renovation Celebration'

16th April 2016

from 3.00 to 5.00pm



Letters to the Editor....

..... Mount Pleasant Close Christmas Lights

Please could I say a massive thank you to everyone visited and donated so generously to the charities supported by the Christmas lights display.

As you may remember, we supported 3 charities, the British Heart Foundation, Cancer Research and MS.

We were able to send a cheque to the value of £206 to each of the charities.

A massive thank you also goes to all of the house owners who took part – we even got a mention from Simon Parkin on ITV's Meridian weather!!

Only another 11 months to before we do it all again!

Many thanks again *Paul Marsh*



... and an old perennial moan - dog fouling!!

For several weeks, since before Christmas, someone has been walking their dog along the village end of Canterbury Road, leaving a trail of mess between the Nailbourne and Wesley Terrace.

It seems, that in spite of repeated warnings and notices someone still fails to take a bag and remove such mess, which is a hazard to the many children/people who walk this path between the shops.

It would be very much appreciated, therefore, if this matter could be rectified.

In hopeful and grateful anticipation! *Mary Blanch*



SATURDAY MARKET

will commence

SATURDAY 16TH MARCH

TAYNE CENTRE

CHURCH RD LYMINGE

PHONE 01303 862710 FOR ENQUIRIES

Thank you to all who supported us in 2015

Looking forward to seeing you March 2016

All profits go to Tayne Centre maintenance fund



BUZZLINES

EASTER HOLIDAY DAY TRIPS

SAT 27 MAR	BRUGES AT EASTER	ADULT £40 CHILD £35
TUE 29 MAR	KENSINGTON PALACE & AFTERNOON TEA	ADULT £56 CHILD £42
WED 30 MAR	CHESSINGTON WORLD OF ADVENTURES	ADULT £50 CHILD £50
WED 30 MAR	THORPE PARK	ADULT £50 CHILD £50
SAT 2 APR	BRIGHTON SEA LIFE CENTRE	ADULT £36 CHILD £28
WED 6 APR	HAMPTON COURT PALACE & THE MAGIC GARDEN	ADULT £43 CHILD £34
THU 7 APR	PAIRI DAIZA PARK BELGIUM	ADULT £58 CHILD £50
FRI 7 APR	SCIENCE MUSEUM LEONARDO DA VINCI EXHIBITION	ADULT £35 CHILD £30

CALL 01303 362870

BUZZLINESTRAVEL.CO.UK

buzzlines
in the discovery lane...



24th APRIL 2016

Local Lyminge runners are hoping to raise money for two individual charities of their choice:

Jayne Ellender - PILGRIMS HOSPICE (East Kent)

Rob Immelman - HOSPICE, UK

If anyone would like to make a donation to help either charity please go to - www.justgiving.com and then enter the runners name according to charity.

Any London Marathon runners wanting to join in on our Saturday runs, please feel free to contact Jayne on 07887921389.

"Remembering that I'll be dead soon is the most important tool I've ever encountered to help me make the big choices in life. Because almost everything - all external expectations, all pride, all fear of embarrassment or failure - these things just fall away in the face of death, leaving only what is truly important."

Steve Jobs

Tutor Aaron Rice

PGCE, BA English, MA (Journalism)
Local teacher with over 10 years of primary
school experience.

Kent Test (11+), SATs, English/Maths

Call (01303) 862128

Elizabeth (Liz) Fry

Ian and the entire family would sincerely like to thank all of our Lyminge friends, neighbours and dog walkers for helping us through the difficult times of the past 4 years. A special thanks goes to Jas and all the staff at our pharmacy for their help and understanding.

The support we received from everybody was much appreciated.

Liz passed peacefully away in the Pilgrims Hospice, Ashford on 30th November with her family around her. She will be deeply missed in our wonderful community.

In aid of the LORD WHISKY SANCTUARY FUND

(Registered Charity 283483)

Park House Animal Sanctuary

Stelling Minnis CT4 6AN. 01303 862622

www.lordwhisky.co.uk

Fur, Feather & Exotic Exhibition

Saturday 27th February - 10am to 4pm

Boughton-under-Blean Village Hall, Nr Faversham

Come and meet some unusual and exotic species including chinchillas, reptiles, birds, ferrets, llama, miniature horses, alpacas and much more.

Small Animal Pet Show (no cats or dogs)

To be judged at 3pm

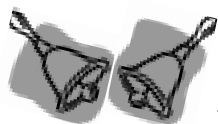
by Pam Ferris (Call the Midwife)

Craft Stalls ~ Tombolas ~ Hot & Cold Refreshments

Tables available £10, phone 01303 862622 to book

New Animal Exhibitors Welcome

Please come and support us and help the animals.



Lyminge Handbell Ringers

The Lyminge Hand Bell group continue to introduce new music and so look forward to the opportunity of playing these new pieces locally. So please consider booking us for your special celebration. You can come and hear us play before booking if you wish and select your own choice of music. We have an increasingly wide selection to choose from. All we need at the venue is a large table for our bells and music, room for up to 12 players and a minimum donation of £40 for our charity, the Nepali Children's Trust. Weekends and evenings only please and plenty of advance notice is helpful.

For further information or to make a booking, please contact: Ro Edmond on 863201 or email welldorm@aol.com

Looking for homecare services?

Our experienced Care Assistants are on hand to offer support to the elderly, people with a learning or physical disability or other care needs for home services no matter your needs -

- ✓ One call a day to multiple calls
- ✓ Short term or long term packages
- ✓ Home from hospital assistance
- ✓ General assistance or complex care
- ✓ Weekday, weekends, days, night call times



Contact your
local branch today

01303

250200

www.nurseplusuk.com

Direct Payments Accepted

Editor: pb@pbarnes20.plus.com

Cantores

Musical Director: Adrian Bawtree

COFFEE CONCERT

**Methodist Church
Lyminge**

Saturday 12 March

11.00 - 12.00 noon

Refreshments from 10.15 in the Tayne Centre

Programme of European Sacred Music

TICKETS £5.00

From Laing Bennett Estate Agents, Lyminge, or at the door.

Supporting JESSIE'S FUND

www.cantoresdominicae.co.uk reg. charity no. 1087409

New Season's Hay

Traditional small bales

Best quality - barn stored £3.50 each

FREE local delivery for 10+ bales

Call Richard: 01303 840733 or 07970 804466

Grimsacre Farm, Elham

www.grimsacrefarm.co.uk

Beat the winter blues!
Book the date now for our next Quiz Night



QUIZ NIGHT

20th February 7pm
Etchinghill Village Hall

Tables of 6 or 8, £3.00 per head

Raffle / craft display and sales
 To reserve your table -

call 01303 863 599 or 07974 073 736

In aid of **Alongside Africa's Street Children** programme

www.alongsideafrica.org (see below)

Health Help Now

NHS web app has been used more than 100,000 times

An award-winning website which helps people find the right NHS service when they are ill or injured has been used more than 100,000 times.



Health Help Now, launched in 2013, was developed by clinicians and health managers in Kent and Medway to help people find the best place for treatment for common symptoms. It shows which services are open and where they are. It can help people find out if they need to see a doctor, pharmacist or use a minor injuries service.

The website – www.healthhelpnow-nhs.net – is also available as a free download for smartphones so people will never be stuck about where to go when they need health help.

Health Help Now gives instant advice about symptoms any time, day or night. It also has the opening hours of all Kent and Medway pharmacies, complete with directions on how to get to your nearest pharmacy which is open.

Dr Chris Markwick, who oversaw the development of **Health Help Now** for Kent and Medway, said: "Getting 100,000 visits is an amazing achievement and illustrates just how useful **Health Help Now** is.

"My patients tell me it helps them find the information they need quickly, and they trust it because they know it was developed locally. One family said they would have gone to A&E if it hadn't been for **Health Help Now**. Instead, they were able to get the advice and medicine they needed from a pharmacy.

"I would encourage everyone in Kent and Medway with a computer, smartphone or tablet to take a look and save it – you never know when you might need it."

Health Help Now won Best Website in the Association for Healthcare Communications and Marketing (AHCM) Communicating Healthcare Awards 2014 and a silver award for the best use of digital in the Chartered Institute for Public Relations regional PRide awards.

Rhodes Minnis Cat Sanctuary Quiz Night



12th March
Etchinghill Village Hall
7pm start

Admission £10 per person*

Supper of: Hearty Winter Vegetable and Pasta soup, served with warm crusty rolls, followed by vanilla cheesecake. There will also be a raffle.

Tables of 6 to 8 people preferred.

Seathwaite, Green Lane, Rhodes Minnis CT4 6XU

Call the Sanctuary on 01303 862243 or

email: rminniscats@gmail.com for tickets.

**All proceeds go directly to the homeless cats.*

Need to free up a bit of space and make some cash after Christmas?

Kids Stuff Sale!

Maternity, baby and children's clothes, toys, games etc.

Sat 6th Feb ~ 10am to 1pm
Lyminge Village Hall

Also.... Craft stall, face painting, tombola, refreshments

Tables £5 each; can be reserved by emailing lymingepreschoolfundraising@gmail.com

All proceeds go to Lyminge Pre-School

Registered Charity No: 1029226

Lucy's Pet Care Service

Experienced in the care and maintenance of cats, dogs, horses, rodents, poultry, raptors, amphibians and ornamental fish.



MSc Biodiversity Management,
 BSc Wildlife Conservation.

Contact Lucy: 07921139098

lucy_anna_smith@hotmail.co.uk



Please don't forget -

Stream Clean
19 March - 10am
Nailbourne - Well Field

Etchinghill

Baby & Toddler Group

We are a friendly toddler group, which caters for babies and children from 0 to school age. Crafts, messy play, trikes, toys and a singing session are included each week. In dry weather there is also outside access for the children to play.

We meet on Wednesdays between 10am -12noon at Etchinghill Village Hall. We charge £2 per family, 1st session is free. Tea/coffee and healthy snacks are provided.

If you have any queries please contact

Julia Tesoro 07809705309

Lyminge Baby and Toddler Group

We'd love you to bring your little ones along to our informal and friendly group for lots of fun. Come along and join us for craft, singing and lots more. We meet every Tuesday morning at the Tayne Centre 10.30-12.00, term time only. Our apologies but no Toddler Group until Tuesday 2nd February due to maintenance work at Tayne Centre.

Cost: £1.50 per session, inc. refreshments for all.

Call: Any enquiries – Jenny 0756 4130569

Sarah 0798 4939220.

E-mail: lymingetoddlergroup@yahoo.co.uk

Rhodes Minnis Toddler Group

We are back on Thursday 7th January 2016, 10am-12 noon

Hope to see our regular members as well as welcoming Mums, Dads, Grandparents and Child Carers.

We charge £1.50 per morning – to include mid-morning refreshments.

For more information phone **Elaine** on **01303 863096**



Lyminge Pre-School



**'OUTSTANDING' – in every category
Ofsted Feb 2011**

**We are now open between 8am and 6pm
ALL YEAR ROUND**

We are a well established pre-school with committed, enthusiastic and highly qualified staff passionate about providing the highest standards of childcare.

To arrange to meet the team, please call:

01303 863149 (day) or 07709420736 (eve) or email lymingepreschool@gmail.com and visit our website

www.lymingepreschool.org.uk

SHEPWAY LIFELINE

*HELPING PEOPLE TO LIVE INDEPENDENTLY IN THEIR
OWN HOME FOR LONGER*

The service they are renowned for is the red button pendant that is worn around the neck or wrist. In an emergency, when it is pressed, it calls for emergency assistance. The Lifeline really is a life saving service and is highly valued within the community. By enabling people to live in their own homes for as long as possible, it avoids the need for expensive residential and nursing home care.

Shepway Lifeline is Telecare Services Association accredited and has an innovative 24/7 monitoring centre, supplying all facets of Telecare alarms, including care and security solutions for vulnerable individuals, lone workers and local businesses.

To contact Shepway Lifeline: -

Phone: (01303) 242615 or 242971

Address: Shepway Lifeline, Civic Centre, Castle Hill
Avenue, Folkestone, CT20 2QY

Email: lifeline.proactive@shepway.gov.uk

Website: www.shepway.gov.uk/lifeline

Sign to Nursery Rhyme Classes

Etchinghill Village Hall on Tuesday mornings

Come and learn to sign with your baby. Signs are taught using nursery rhymes, action songs and musical instruments.

Spaces are limited so to book your place and for more information please call

07800 737936 or go to

www.daisychaincourses.co.uk



**Daisychain
Courses**

FOLKESTONE DISTRICT NATIONAL DANCE GROUP

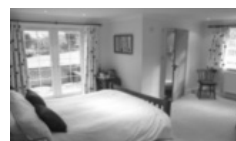
Meets on Tuesdays 7.30 – 9.30 pm from late September to mid-June at

Newington Village Hall, Newington, Folkestone

to learn and enjoy folk dances from many different countries. No experience or partner necessary.

Tel: **01303 249199** or **01227 709557**

Bridge Cottage Bed & Breakfast 4 Stars Silver Award



**Luxury accommodation in a tranquil setting
Chris & Alison, Shuttlesfield Lane, Ottinge
01303 862933**

www.bridgecottagesimplybandb.co.uk

Shuttlesfield Barn – 4 Star Gold – Self Catering

Rural location. Two bedrooms, ensuite bathroom and wetroom. Disabled facilities. Short and longer stays.



Families, dogs, horses welcome. Located on walking, cycling, riding routes. Heated outdoor pool in summer.



Info@shuttlesfieldbarn.co.uk Tel: 01303862729

www.shuttlesfieldbarn.co.uk CT18 8LB

**for buses from Lyminge Post Office to
Folkestone Town Centre via Etchinghill & Cheriton High Street**

MONDAYS TO SATURDAYS except Bank Holidays

There are route 17 buses at 0705 (not Saturdays), 0749, 0909, 0939 (not Saturdays), 1004, 1034, 1104, 1204, 1304, 1404, 1514, 1614 (1619 on schooldays), 1629 (schooldays only), 1654 (schooldays only), 1719, 1749, 1834, 1929, 2113 and 2313.

There are also route 18 buses to Sandling Station & Hythe - for times see our website or call the number below.

SUNDAYS & BANK HOLIDAYS

There are route 17 buses at 0947, 1147, 1347, 1547, 1802 and 2002.

**for buses from Lyminge (opposite Aberdeen House) to
Canterbury City Centre via Elham, Barham & Bridge**

MONDAYS TO SATURDAYS except Bank Holidays

There are route 17 buses at 0727 (schooldays only), 0732, 0752, 0903, 0938, 1028, 1128, 1228, 1328, 1443, 1613, 1703, 1803, 2001 and 2201.

There are also route 18 buses to Canterbury via Stelling Minnis and Bossingham - for times see our website or call the number below.

SUNDAYS & BANK HOLIDAYS

There are route 17 buses at 0827, 1027, 1227, 1427, 1642 and 1842.

These times will operate from 4 January 2016.



timetable information **0871 200 22 33**
Calls cost 12p per minute plus your phone company's access charge
www.stagecoachbus.com

TAYNE CENTRE HALL HIRE

Previously known as the Lyminge Methodist Church Hall

Clayson Hall

1 October to 31 May (including heating) £9.00 per hour :
£32.00 per 4 hour session : £64.00 full day

1 June to 30 September

£6.50 per hour : £23.00 per 4 hour session : £46.00 full day

Rigden Room (Parlour) with heating, if required*

£6.50 per hour all year (*electric - over heaters).

Burren Room with heating, if required*

£5.00 per hour all year, (*electric - over heaters)

Overnight Stays

1 June to 30 September £40; 1 October to 31 May £55

For any enquiries please call **07971 722 401**



YOUR LYMINGE VILLAGE HALL

Reg. Charity: 28145

The Hall has 2 meeting rooms and a large hall; great for everything from dances, fun quiz nights and theatrical events.

Hire includes access to a fully equipped kitchen, serving hatches and bar (Licence available), all with easy car parking.

NEW dedicated booking line on 0749 7625 741

where Kate Kellett or Pippa Hamilton will be delighted to discuss your individual requirements.

Examples of prices for the main hall are: Friday or Saturday evening £65.00, weekday evenings £20.00 and all day on Saturday £135.00

lymingevillagehall.org.uk
lymingevillagehall@outlook.com



Find us on Facebook
Lyminge Village Hall



Follow us on Twitter
@Lymingevhall

ETCHINGHILL VILLAGE HALL HIRE FEES

The next time you are thinking of holding a function you should try Etchinghill Village Hall, which holds the highest Hallmark accreditation level, with its excellent facilities, including ample parking space.

The standard hire charge for the main hall and kitchen are:

Weekdays £10.00 per hour

Saturdays £12.00 per hour

Sundays £12.00 per hour

During the winter months (1 November to 31 March) a Winter Supplement of £1.00 per hour is added to the above rates.

Special rates apply for weddings and all day events with a range of discounts on the above rates applying to all lettings of more than three continuous hours and additional discounts are available to Etchinghill Residents and Regular Hirers.

The use of a separate Committee Room is also available.

For all bookings or enquiries please contact:

Sylvia Williams on 01303 863547

Rhodes Minnis Village Hall

Charity No.800345

Rhodes Minnis Village Hall is located 2kms (1¼miles) from Lyminge and just off Longage Hill and Whitehorse Lane in Chapel Lane

The hall, which holds Hallmark accreditation, is ideal for children's parties, band practice, quizzes, meetings and fundraising events and has the capacity to take parties of up to 100. The rates include the use of the kitchen.

Rates

Mon to Fri £15 per session £40 all day

Sat & Sun £20 per session

£30 for evening session and £60 all day

Sessions

AM session 08.30 - 12.30

PM session 13.30 - 17.30

Evening session 18.00 - 23.45

There are special rates for regular users.

For all bookings and enquires please contact:

**Martin Fry 01303 863177 or 07849217793 or e-mail:
book @rmvh.org.uk**

Sibton Park Cricket Club

We extend an invitation to our local residents, please join us on match days and selected evenings and take advantage of the Club's outstanding venue, facilities and fully licensed bar.

Having a Celebration? Require a regular venue?

The club house and grounds are available

For further information or to make a booking

please contact: Andy & Clare Allon

07817 751262 - aallon44@yahoo.co.uk



This page is printed to give readers and organisers the opportunity of planning events without clashing with existing ones, which are already in the 'diary'. It is not intended as a means of advertising and we take no responsibility for errors or omissions. Acceptance is at the discretion of the editor. Please send your updates by email to pb@pbarnes20.plus.com or via methods outlined on Page 2. Location and name codes follow:

C&H: Coach & Horses; **ECC:** Etchinghill Cricket Club; **EVH:** Etchinghill Village Hall; **ERA:** Etchinghill Residents' Association; **ES:** Elham Square; **JC:** Jubilee Centre; **JF:** Jubilee Field; **LB:** Laing Bennett; **LBC:** Bowls Club; **LL:** Library; **LMC:** Lyminge Methodist Church; **LPC:** Lyminge Parish Church; **LSH:** Lyminge School Hall; **LVH:** Lyminge Village Hall; **LW:** Lord Whisky; **NVH:** Newington Village Hall; **PC:** Postling Church; **PH:** Lord Whisky, Park Hse. **PVH:** Postling Village Hall; **RVH:** Rhodes Minnis Village Hall; **RMC:** Rhodes Minnis Church; **SNL:** See News Letter for info; **TC:** Tayne Centre.

One Off or Irregular Events

Date	Time	Event	Where	Tel. No.	Date	Time	Event	Where	Tel. No.
6 February	10am	Kids Stuff Sale	LVH		12 June ??	TBC	Queen's Birthday Party	EVH	
12 February	7.30pm	Music of Friday	LPC		18 June		Boot Fair	ECC	
20 February	7pm	Alongside Africa Quiz	EVH	863599	7 July	7pm	Cantores Prom Concert		07813071867
5 March	1pm	Jumble Sale	Elham-VH	863830	16 July		Fun Day	TF	863737
12 March	7pm	RM Cat Sanctuary Quiz	RMCS	862243					
19 March	10am	Stream Clean	TF	862015					
9 April		Boot Fair	ECC	07896717787					
16 April	3pm	Renovation Celebration	TC						
23 April		Boot Fair	ECC	07896717787					
7 May		Boot Fair	ECC	07896717787					
21 May		Boot Fair	ECC	07896717787					
4 June		Boot Fair	ECC	07896717787					

Weekly Events

Day	Time	Event	Where	Tel. No.	Day	Time	Event	Where	Tel. No.
Mon	10am	Open House	EVH	863394	Wed	11.45am	Pilates	TC	07825109670
Mon	10am	Bridge Club	BC	863177	Wed	6pm	Karate for Juniors	EVH	07554004526
Mon	10.30am	Lyminge Larks (Singing)	TC	01233750223	Wed	7pm	French Conversation	KH	862972
Mon	11am	Cookery	JC	269602	Wed	7.30pm	Cantores Choir	LSH	07813071867
Mon	2pm	Computer Buddy (need to book)	LL	862180	Wed	8pm	Scottish Country Dancing	EVH	862761
Mon	2.30pm	Monday Fellowship	TC	862164	Thur	9.30am	Baby Rhyme Time	LL	862180
Mon	5.45pm	Lyminge Youth Drama Group	TC	862602	Thur	10am	RM Toddlers Group	RVH	863096
Mon	6.30pm	Judo Club	LVH	862946	Thur	10am	Art Group - Morning	TC	211364
Tues ¹	10am	Baby & Toddler Group	TC	863274	Thur	11am	Shopping trips to Supermarket	JC	269602
Tues	10am	Sign to Nursery Rhyme Classes	EVH	07800737936	Thur	2pm	Art Group - Afternoon	TC	862972
Tues	10.30am	Art Class	JC	269602	Thur	6pm	Ballroom and Salsa Dancing	EVH	07967979610
Tues	11.15am	Chairobics	JC	269602	Thur	6.45pm	Short Mat Bowls	LVH	863842
Tues	6pm	Football Training	JF	07967342226	Fri	10am	Talk Time	LL	862180
Tues	6.45pm	Short Mat Bowls	LVH	863842	Fri	11am	Seated Exercise	JC	269602
Wed	10.15am	Mature Movers (Exercise)	TC	862873	Fri	5pm	Hawkinge Flyers (Lyminge Branch)	Katrina	07881457994

Monthly Events

When	Time	Event	Where	Tel. No.	When	Time	Event	Where	Tel. No.
3 rd Mon	7.30pm	Etchinghill Cinema	EVH	863333	3 rd Wed	7.30pm	RM Evening Circle	RVH	862913
Last Mon		Parish Council Meeting	SNL	239500	Last Wed	11am	Singing For Health	JC	862364
1 st Tues	10.30am	Reading Group	LL	862180	Last Wed	7.30pm	Quiz Night	C&H	862694
1 st Tues	11am	Reminiscence	JC	269602	4 th Fri	7.30pm	Beetle Drive	RVH	862616
1 st Tues ²	7.30pm	LHS Talk/Event	TC	862972	Last Fri	1.30pm	Team Quiz	JC	269602
3 rd Tues	9.45am	Family History	LL	862180	1 st Sat	10am	Village Market	EVH	863819
3 rd Tues	2.30pm	Etchinghill W.I.	EVH	863503	2 nd Sat	10am	Postling Ch. Coffee Morning	PC	863536
3 rd Tues ³	7.30pm	Gardening Society	TC	862264	3 rd Sat	8am	Saturday Market	TC	862164
1 st Wed	10.30am	Lyminge Friends	LMP	862598	Last Sat	11am	Poetry Group	LL	862180
2 nd Wed	10.30am	Mothers Union	NP	862221	1 st Thurs	7.30pm	British Legion, Elham Branch	Age, UK	862779

¹ In term time only ² Except Jan, Feb, July and August ³ Except Jan, Feb, Aug ⁴ Except Aug and Dec

Out and About

Do you have any photos of local events or local groups in action, please call 01303 862699. Give your group a FREE plug!



There was not enough space last month for all the pictures that were sent in so some were printed and put in the back of the Lyminge Association noticeboard in the car park. One of them was this photo of part of the **St. Hilda's Ukele Band** which came to perform at **Etchinghill W.I.** at Etchinghill Village Hall on 8th December last year.



Members of **Lyminge Friends** enjoying a celebratory New Year meal at the Coach & Horses on 6th January

Lyminge Mothers Union enjoying their Lunch Party at the Coach & Horses on 13th January



Mystery Photo

Last month's picture was part of the National Lottery sign - that was the easy bit! - at the Lyminge Food & Wine.

Try this one -



Not the best place to wait for a bus!

The Junction between Canterbury Road and Silverlands Road during the dreadful recent wet weather. Car were driving on the wrong side of the road to avoid the water. However, only a slight inconvenience compared to people in Cumbria.

Council Tax Scam

Kent County Council Trading Standards is warning the public of fraudsters who are telephoning to tell them they are in the wrong council tax bracket and are owed a rebate of around £6,000.

Scammers will ask for an up-front fee of around £65 in order to process the payment, but no rebate will be issued.

You can check your council tax band for free by contacting the Valuation Office Agency, telephone: 0300 0501 501



1st Lyminge Guides are holding a fundraising quiz to support an activity weekend trip planned for June.

The quiz will be family friendly with rounds to challenge all! It will be at Etchinghill Village Hall on Saturday March 19th, 6pm to 9pm. Teams of 6, £3 per person.

The Guides have put a lot of effort into planning the quiz and would like to share the evening with you!

To book a team or for more information please contact Ann on 07964 295218.

Thank you for your support - from 1st Lyminge Guides.



Please come along on 19th March to help keep the Nailbourne clear and tidy. Maybe the bulbs that some of the Lyminge Association Committee planted, near the Well, before Christmas will have started blooming ! ➡

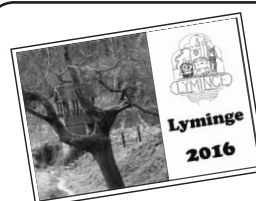
The great team of volunteers in action last autumn ➡



➡ Nine of **Lyminge Friends** met up at China China on New Year's Eve to see in 2016



➡ Another picture we had to miss last month ...
Going Crackers ~
Cracker making at **Talk Time** in **Lyminge Library**



It is not too late !
to get the **Lyminge 2016 Calendar**. If you can't get one in the village please call 862699

D.M.B. Plastering

All aspects undertaken
Interior. Exterior. Plastering. Rendering.
Coving. Ceilings Wall. Floors
Finest quality assured. CSCS Certified.
26 years experience.
Free estimates. Reliable service. Fully insured.
Call David on 07818 607209

P Davis + Co

General Builders and Roofing Specialist
All work undertaken
Call for free estimate

Tel: 01303 863049 or 0784 6769643

Personal Computing

For straightforward I.T. advice, solutions
and training

Contact: **Steve Ashman**
862869
sra@ashman-consulting.co.uk



CARE FOR YOUR FEET

IAN COX MSSCh MBChA CHIROPODIST
at AGE UK HYTHE AND LYMINGE

Treatments include toenail cutting, corns, hard skin, fungus and more
Prices from £12.00

For further information and to book an appointment
'phone 01303 269602



Wilco Plumbing & Heating

Central Heating Installations & Repairs
Gas & Oil Boiler repairs & replacements
5 Year Guarantee on Worcester Bosch Boilers.
Local Experienced Engineer, Emergency plumbing 24/7 call out
Registered with the Institute of Plumbing
Gas Safe Registered-OFTEC Registered
01303 862173 07860 452640
paul@wilcoplumbing.co.uk www.wilcoplumbing.co.uk

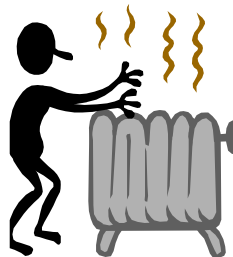
TOBY'S TREE SURGERY

Thinning - Reducing - Maintenance - Felling
ALL TREE WORK, BOTH PRIVATE AND COMMERCIAL,
UNDERTAKEN BY OUR NPTC TRAINED OPERATIVES
Professional Friendly Service

FREE ESTIMATES - FULLY INSURED
Contact Toby Griggs:
07854 098 395 or (01303) 863642

D. SCRIVENS

PLUMBING & HEATING
Oil Fired Boiler Installation,
Commissioning, Service and Maintenance.
Unvented Hot Water Systems - Solar Water Heating
Central Heating - Water Softeners - Bathrooms - Showers - En suites
Approved 'Aqualisa' Installer
WATER INDUSTRY 'APPROVED PLUMBER'
FULLY INSURED
07810 897076 scrivensplumbing@aol.com



K & M LEWSEY LTD

plumbing & heating engineers
established 1969
Registered plumber
Gas ACOP approved engineers
01303 264535
manned office
daytime Monday to Friday

Total garden care for all your needs

TIM MILLETT

Grass Maintenance, General Gardening, Small & Medium
Size Tree Work, Stump Grinding and Wood chipping
Fencing Repairs & New Installations
Turfing, Hard & Soft Landscaping
Free Estimates - Fully Insured
01303 863676 07752 880583
Email: info@tmhorticulture.co.uk



Respiratory
Rehab
Bringing health home

Providing private community respiratory
physiotherapy, general physiotherapy and
rehabilitation to East Kent

T: 07904482097
E: kris@respiratoryrehab.co.uk
W: www.respiratoryrehab.co.uk

Kris Bahadur. Chartered Physiotherapist.
MSc Physiotherapy, BSc (Hons), MCSP, SRP

N.P.C.

Domestic Appliance Services

*Service and repair of washing machines, tumble driers,
dishwashers, cleaners and small electrical work. For a
prompt and friendly service*

Call Neil Collard 01303 892234 or 07798716044
or **www.npcdomesticapplianceservices.co.uk**

Auto Economy Centre
Fully equipped Mechanical Repair & Service Centre
with the latest diagnostic equipment
MOTs £44.95

01303 863656
Orchard Garage, Canterbury Rd, Etchinghill
www.autoeconomycentre.com

Old English Pine

Antique, repro pine, oak and French-style painted furniture with beautiful and reasonable priced accessories to make
your house a home. Bespoke pine units made to order. Huge shop - over 3 floors. Open 7 days a week.

Tel: 01303 248560 www.oldenglishpineinkent.co.uk 100/102 and 90 Sandgate High Street, Sandgate



**Lyninge
Country
Bakery**

01303 720126
www.lyningecountrybakery.co.uk
baker@lyningecountrybakery.co.uk

A Selection Of Our Produce

- Traditional Loaves
- Low GI Bread
- Sweet Products
- Mini Loaves
- Artisan Bread
- Baguettes
- Specialty Loaves
- Savoury Products
- Bakery Specials

✂ SNIPPERS & CLIPPERS ✂ UNISEX HAIR SALON

LYMINGE SALON

Facial Waxing : Gents Welcome : Shellac Nails
Free WiFi : Appointments not always needed

01303 647222 : info@snippersandclippers.co.uk
Station Road, Lyninge, CT18 8HP



Local Bookkeeper

Sole Trader & Small Business Accounts
VAT, Self Assessment, Payroll, CIS
& General Administration Services



Call or e-mail:

Tel: 01303 864229 Mob: 07702 321686

e-mail: tash@bestbookwork.tax

www.bestbookwork.co.uk



T. Metcalfe Fencing Contractors

Approved Expert Installer for Jacksons Fencing
Established over 30 years
Fully insured - Highly experienced teams



Panel fencing, gates, decking, pergolas, post & rail,
stock fencing, security, landscaping & tree surgery.

01303 840201 07790 290 155

metcalfefencing@btinternet.com

Proprietor - Derek Burr,
Ash Ridge House, Elham



KENT & SUSSEX HOLIDAY COTTAGES

With over 250 properties in this region and an expert local team, call now to book
your break or to talk to one of the team about letting your property for holiday rentals.

— 01304 619 444 —

www.kentandsussexcottages.co.uk • info@kentandsussexcottages.co.uk

12 King Street, Sandwich, Kent CT13 9BT

It pays to advertise in local newsletters and magazines

To do so, please contact the Editor

01303 863737
pb@pbarnes20.plus.com

Life's Little Gems Ltd Professional Domestic Cleaning

- Busy, friendly reliable family service
- Frequent and one-off cleans
- Cleaners also needed, good rates of pay, own car essential

Email: Lifelittlegems@gmail.com

Phone: 07860 658090



Cleansing and Decluttering Service

SEATHWAITE BOARDING CATTERY LTD.

Supporting Rhodes Minnis Cat Sanctuary

GREEN LANE, RHODES MINNIS, CT4 6XUTEL: 01303 862243 (Registered charity 262245)

ONLY CATS BOARDED, IN QUIET COUNTRY LOCATION

Individually heated chalets. Single cat £7 per day, a reduction for 2
or more cats. All cats boarded with us must have current vaccina-
tions against cat flu & feline enteritis. All profits from the boarding
cattery go to support homeless cats in the Sanctuary.

RHODES MINNIS CAT SANCTUARY

has a wide variety of cats available to caring homes.

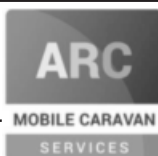
Alan Croucher Caravan Engineer

Have your Caravan, Motorhome, Horsebox or
Trailer serviced without the fuss of taking it
to a workshop.

www.arcmobilecaravanservices.com

Mobile: 07921 480919 Home: 01303 863194

*Non mechanical only on motorhomes and horseboxes



East Kent Foot Care

Mobile Foot Health Practitioner

Jo Shapter BSc (Hons), MCFHP, MAFHP

Treating and managing common foot problems,
corns, callus, verrucae, thickened nails,
toe nail management, fungal problems,
diabetic foot assessments etc.

Call: 07745 532075

Member of the British Association of Foot Health Professionals



VICTORIA'S HAIR AND BEAUTY SALON 2 Cullings Hill, Elham, CT4 6TE

MANICURES / PEDICURES / CND SHELLAC / ST TROPEZ SPRAY TAN / FACIALS / MASSAGE / TINTING /
HOT STONES / HAIR / PAMPER PACKAGES / WEDDING MAKE UP / GIFT VOUCHERS

01303 840 931 / www.victoriashairandbeauty.com



Ralph Allard Chimney Sweep



All chimneys, boilers and stoves swept.
Brush and Vacuum. Certificates issued.
HETAS and NACS registered, fully insured.

Member of National Association of Chimney Sweeps

01303 844465 or 07813716654

THE CLINIC

Garden Suite
Pendragon House
4 Station Road
Lyminge
Kent CT18 8HP
01303 863359

THE CLINIC Lyminge

podiatry & osteopathy
Formerly Wholisticworks Clinic



info@theclinic-lyminge.co.uk
www.theclinic-lyminge.co.uk

REGISTERED OSTEOPATHS & MEDICAL ACUPUNCTURIST

Adam Price B.Sc Hons (Ost) Katie Price B.Sc Hons (Ost)

The Clinic 01303 863359 or mob: 07980 897382

- Treatment of lower back pain, both acute and chronic
- Treatment of tension/cervical type headaches both acute & chronic
- Treatment of various stiff & painful arthritic conditions
- Treatment of sports injuries, both soft tissue & skeletal
- Deep tissue back, neck & shoulder massage for symptomatic relief

The cost of your treatment may be recoverable from your insurers. Please check



Sunhouse Electrical

Your local reliable Electrician

Part P Registered & Elecsa Approved

Fully Insured & On Competent Persons Register

For a free quotation & advice call James on

01303 766333

www.sunhouse-electrical.com

GOSBEE CONSTRUCTION

Over 30 years experience. Jacksons Expert Installer
Reliable. Friendly. Professional

Property Maintenance
Hedge & Tree Cutting
Tarmacadam Works
Grass Cutting

Building Work
Garden Design
Landscaping
Fencing & Gates

Ponds
Patios
Driveways

For a free, no obligation quote: **07974 835511 or 01303 863337**

Visit our website: gosbeeconstruction.co.uk

E-mail us: info@gosbeeconstruction.co.uk

S R Accounting and Business Solutions LLP

"Working hand in hand with your business"

Denise Roberts, ACIS, ACMA & David Sayle

Qualified accountants with a combined experience of over 50 years. We offer business start-up advice, business planning, monthly & annual accounts, VAT & tax submissions, full payroll service, company secretarial service.

droberts@sr-accounts.co.uk

01303 862559

0751 1097707 www.sr-accounts.co.uk



MANOR VETERINARY CLINIC

We care for them all, great and small

Lyminge Clinic: Methodist Church Hall
Monday, Wednesday & Friday 4-6pm

01303 273203

www.manorveterinaryclinic.co.uk

STERRY'S

*Independent
Funeral Director*

01303 272525
93 Cheriton High Street
(opp Co-op)

01303 264400
41 High Street, Hythe
(opp Lloyds Bank)

Always here for you; 24 hour service. Home visits on request.
Choice of pre-paid funeral plans

KEEP CALM AND LOSE WEIGHT NOW!



- Tasty & healthy weight loss smoothie shakes
- Velvety vanilla & cheeky chocolate flavours
- Only £1.39 per meal serving
- Sugar-free healthy children's milkshakes!
- Complete family nutrition
- 100% fruit & vegetable-based backed by research

www.willwright.transform30.com

Try the 30 day challenge!

Tel: 01303 863460 or 07905 031850

Red Dragon I.T. Ltd.



- Windows, Mac & Linux Systems
- PC Health Checks
- Wired & Wireless Networks
- Website Design
- Graphic Design

T: 01303 723456 | E: info@rdit.co.uk | www.rdit.co.uk
2 Station Road, Lyminge, Folkestone, Kent, CT18 8HP

LYMINGE FOOD AND WINE 01303 862225



We are here to serve you
Mon. – Sun. 7:00am to 9:00pm
including Bank Holidays
National Lottery Here



South East Aerial & Satellite Solutions

Digital – Freeview – Satellite – Aerials

Supply and fit of quality digital installations, FREEVIEW, SKY, aerials, poor reception and problem solving, upgrades and repairs by fully accredited engineers

Free quotations and advice, fixed prices, fully insured

Freeview

NO CALL-OUT CHARGE

freesat

07968 659404 - 07825168010 - 01303862361



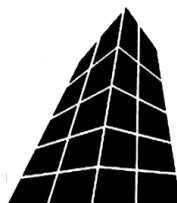
We are open 5 days a week!! Weekdays 9am-6pm
We are also open on weekends by appointment only.
We can also collect your PC or Mac from you!!
Call now on 01303 720 019

COUNTRY FARE

CATERING SERVICES

Country Weddings, Christenings and All Family Gatherings, Corporate Lunches, Seasonal Parties & Celebration Cakes

Sally Burr 01303 863642 07814 610995
sallycountryfare@gmail.com



Filehurst Associates

Archive, Warehousing, Logistics,
Business & Household Storage.
Domestic & Commercial removals
and storage.

01303 239990 www.filehurst.co.uk

FRESHLOOK GARDENS

Regular lawn mowing service. Garden design. Hard and soft landscaping. General garden work, fencing and decking. Turfing hedge cutting, small and medium tree work. Water features, ponds and patios.

For free quotation ring Geoffrey Hogben
01303 844 680 / 07866 091633

sales@freshlookgardens.info

www.freshlookgardens.info

Established since 1990. Fully insured.

Browns

Elham 01303 840422
Hawkinge 01303 892000

Sales
& lettings

Over 40 years of Kent
village and country
property

THE local and regional
specialist. Why settle
for less?

www.brownscountryproperty.co.uk

rightmove

onTheMarket.com

RICS

LYMINGE NEWSAGENTS

11-13 STATION ROAD, LYMINGE CT18 8HS
01303862566

POST OFFICE, 'OFF LICENCE'
CONVENIENCE STORE

Dry Cleaning and Laundry, can deliver Papers
OPENING HOURS

7AM TO 10PM EVERY DAY

Local Tradesman

J Tappenden

Established 36 years

Painter/Decorator/Builder

01303 862467

077755 78008



THE DRIVING INSTRUCTOR

ROGER DOWLE

ADI QUALIFIED PATIENT & PROFESSIONAL TUITION
FOR MORE INFORMATION OR TO BOOK A LESSON PLEASE
CALL ROGER

07870939936

Introductory offer, beginners only, first five HOURS £80

Jackson Plumbing Property Maintenance

Complete bathrooms and tiling
No job too small. Special rates for OAP's.

Telephone: home/evening 01303 270691
or daytime 07773 089398 or 07864 929826

M. J. Athow

BUILDER & DECORATOR, EST. 1965
GENERAL MAINTENANCE

Qualified and Insured. Free estimates
Telephone: 862616 Mobile: 07976 306665
Email: m.j.athow@live.co.uk

SIX MILE GARAGE LTD

Stone Street, Stelling Minnis, Canterbury, Kent CT4 6DN

- Car and light commercial servicing
- Class 4 and 7 mots and repairs
- Car and light commercial accident repair centre (insurance approved)
- Diagnostics bay with latest equipment
- Tyre bay with four wheel alignment and balancing
- Air conditioning servicing

Tel. 01227 709214 or 01227 709491, Fax 01227 709331

E-mail: office@sixmilegarage.co.uk

Trevor Law

Electrical Installations



Serving Elham Valley for 30 years
Part P Registered

01303 862348

07850 970087

J. V. Services

Servicing and Repairs: Serve/Repair/Full Restoration:

- Garden Machinery
- Ride on Mowers
- Trailers & Horseboxes
- Quad Bikes
- Classic Cars
- Compact Tractors
- Vintage Tractors
- Classic Tractors

(Free collection and delivery)

Mobile: 078 0300 3047

john@jvserviceskent.com

THE COUNTRY FENCING COMPANY

Local fencing company supplying and fitting timber fencing, trellis, gates and concrete posts for homes and businesses. We are friendly and reliable so please contact us for a free quote.

Email :- info@thecountryfencingcompany.co.uk

Website :- www.thecountryfencingcompany.co.uk Tel :- 07519 590941





DILTON MINI SKIP HIRE

Ballast, Hardcore, Sand
and Topsoil Supplied
REGISTERED WASTE CARRIER
01303 812448 or 07799 433754

'Helping you enjoy your garden'

CRT Gardening

Knowledge of general gardening, including lawn care, hedge trimming and cutting, vegetable garden work, fencing installations and repairs, small and medium size tree work and ongoing maintenance of all of them.

Heavy-duty work is also undertaken.

Free estimates; fully insured. Karl Dodd 07967442518

Email: karl.dodd@live.co.uk www.crtgardening.com

AIR LINK CARS

(You pack up, we pick up)

Airport, Seaport & Long Distance Travel Specialists.

The Family Run Business where service really counts

Estate cars and People Carriers



Fixed price 24hrs a day. No extras.

Written Confirmation of booking.

For the Easy Airport Link, Think AIR LINK!

01303 862704 - 07753 760897

WILL WOODBRIDGE

Carpenter/small works builder

With years of experience

01303 863062



Laing Bennett
INDEPENDENT ESTATE & LETTING AGENTS

INCORPORATING PHILIP A CHAPMAN

With our excellent local knowledge, service
and two local offices we will get you moving

The Estate Office 8 Station Road Lyminge Kent CT18 8HP
T 01303 863393 E lyminge@laingbennett.co.uk

134 High Street Hythe Kent CT21 5LB

T 01303 264846 E hythe@laingbennett.co.uk

www.laingbennett.co.uk

ALWAYS STRUGGLED WITH WEIGHT-LOSS

Then ring me in confidence to discuss a solution

HYPHE HYPNOTHERAPY

'Helping to get you back in control'

07773797438



Claire's Country Kitchen

Join us and enjoy some of our delicious home-baked items.
Breakfasts, Light Lunches, and Snacks with a selection of
Teas or Coffees.

Open Tuesday – Saturday, 7.30am - 4.00pm
Canterbury Road, Lyminge, Kent CT18 8HU

01303 864222

SCRUBBERS - Est. 1988

THE HOME AND COMMERCIAL CLEANERS

One off, regular or moving day 'Blitz'

Oven cleaning – Ironing

Carpet cleaning and more...

For a friendly and reliable service

Free Estimates

Tel: 01303487019 or 07834128671

Dennis Huntley

Installer of wood and multi-fuel stoves & fireplaces
Heating engineer, solid fuel servicing and chimney sweep

01303 862343

07850 784365



Notice to Advertisers

Please ensure your invoices have been paid.
Unfortunately, failure to make payment will lead
to exclusion from these advertising pages

Editor



CEDAR HOME MAINTENANCE

Building Alterations
Kitchen Installations
Painting & Decorating
Plumbing
Plastering

Damp Proofing
Drainage
Carpentry
Re-pointing
Patio's

Windows & Doors
Gutters & Down Pipes
Fascia's & Soffits
Glazing
Electrical

Roofing
Fencing & Gates
Property Clearance
All Work carried out by Qualified Tradesmen (Fully insured – all areas of Kent covered)

Call Dominic: 07968197613 Office: 01303 230787

cedarhm@hotmail.co.uk and www.cedarhomemaintenance.co.uk

Environment Agency Registered (Reg/472477) Established Since 1986

HOLDEN PLASTERING

All aspects of Plastering

Smooth-over Artex - a speciality.

Coving, Tiling and Plumbing

Phone JAMES for free estimate or advice on:

01303 770449

07773 262970

Coul-Pups Pet Care Service Fully insured, qualified and experienced member of National Association of Registered Pet Sitters (NARPS). Dog walking, 1 to 1 dog training or in class environment in association with Elham Dog Training Club. Dog grooming, cat and small pet care and house/pet sitting.

Visit: <http://coul-pups.vpweb.co.uk/> Email: coulpups@gmail.com Phone: 01303 255176 or 07542 727326

Elham Dog Training Club Lyn Fagg 01303 862820