



THE LYMINGE NEWSLETTER

For the communities of LYMINGE, ETCHINGHILL, RHODES MINNIS and POSTLING

December 2016

Produced by
THE LYMINGE ASSOCIATION
www.lyminge.org.uk

News from The Lyminge Association

Father Christmas to Visit Lyminge 22nd December

A real tear-jerking moment invariably happens when a young child personally receives a present from Father Christmas.

The Lyminge Association has been fortunate again this year to commandeer the support of Father Christmas to personally deliver presents to your homes. The **gifts for delivery must be well wrapped, clearly labelled with the recipient's name and address** and left at **Laing Bennett's** between **1st to 21st December**. A **small charge of £2** is made per address; there is no limit to the number of presents per household, but **each present** needs to be clearly marked with the recipient's name and address. And hey-presto, Father Christmas delivers them to each address in the early evening of **Thursday 22nd December**.



Events 2017

With 2017, just around the corner here are some dates of forthcoming events:

Musical Evening - Hythe Town Concert Band - 25th February

Stream Cleans - Saturday 18th March and Saturday 23rd September

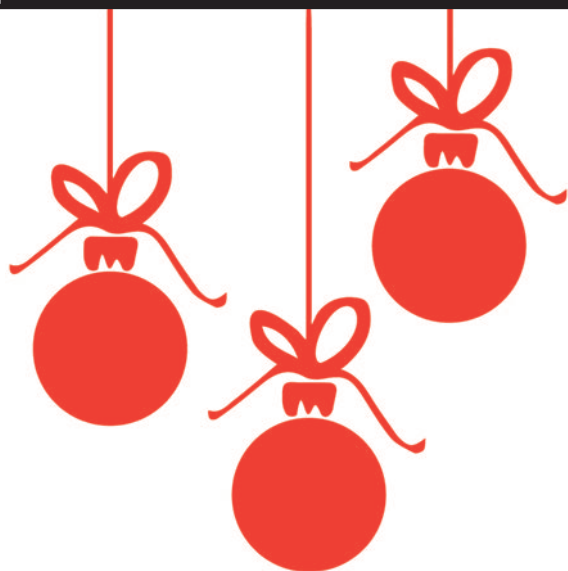
Garage Safaris - Saturday 29th April and Sunday 17th September

Litter Pick - Saturday 13th May

Lyminge Festival 19th – 25th June

Garden Safari 24th & 25th June

St Nicholas Fayre, Lyminge Parish Church – Saturday 3rd December 10.00am - 2.30pm



*Happy Christmas
and a Healthy New Year
to everyone
from
The Lyminge
Association*





LYMINGE PARISH CHURCH SERVICES & ACTIVITIES

Church Website: www.lymingechurch.co.uk
E-mail: office@lymingechurch.co.uk

SERVICES

| | | |
|---------------------------|---------|--|
| Sun 4 th Dec | 8.00am | Holy Communion |
| | 11.00am | WOW (Ways of Worship) |
| Wed 7 th Dec | 7.30pm | Advent Course 'Living in the Light' |
| Sun 11 th Dec | 8.00am | Holy Communion |
| | 11.00am | Sung Eucharist |
| Tues 13 th Dec | 4.00pm | Lyminge School Christmas Concert |
| | 6.00pm | Lyminge School Christmas Concert |
| Wed 14 th Dec | 7.30pm | Advent Course 'Living in the Light' |
| Sun 18 th | 11.00am | Family Service <i>with Children's Corner</i> |
| | 6.00pm | Carol Service |
| Wed 21 st Dec | | NO Open House Bible Study & Discussion |
| Sat 24 th Dec | | CHRISTMAS EVE |
| | 3.00pm | Nativity and Crib Service |
| | 11.30pm | Midnight Mass |
| Sun 25 th Dec | | CHRISTMAS DAY |
| | 8.00am | Holy Communion |
| | 11.00am | Toys and Joy Service |
| Wed 28 th Dec | | NO Open House Bible Study & Discussion |

ACTIVITIES THIS MONTH

Coffee Morning in Wentworth Close Lounge

Friday 2nd December from 10.00am to 11.30am
In the lounge at Wentworth Close
(entrance via the car park)

Please contact Lynne on 863010 or Lorraine on 863216

St Nicholas Fayre

Saturday 3rd December from 10.00am to 2.30pm in the church

*Lots of stalls with gifts, crafts, home produce etc
Childrens Games and raffle with £100 first prize
Mulled wine, Mince Pies, Bacon Rolls, Barbeque, Light Lunches*

Music on a Friday

A Christmas theme

Friday 9th December at 7.30 in the church

Free Entrance, Free Mulled Wine and Mince Pies

Mothers Union

on Wednesday 14th December at 10.30 am
in the lounge at Nailbourne Court

A Christmas meeting – favourite poems/carols etc,
mulled wine & mince pies

Please contact Sue Rawlings 862221 if you are interested and/or need transport

Ethelburga Luncheon Club

Christmas Lunch - must have been prebooked
Thursday 15th December meeting at 12.00 noon
at the Coach and Horses

PADDLESWORTH PARISH CHURCH SERVICES

| | |
|--------------------------|---|
| Sun 4 th Dec | NO SERVICES |
| Sun 11 th Dec | 9.30am Holy Communion |
| Sun 18 th Dec | 3.00pm Crib and Christingle Service |
| Sat 24 th Dec | 11.30pm Carol Service at Pub and Church |
| Sun 25 th Dec | NO SERVICES |

LYMINGE METHODIST CHURCH

Visitors are very welcome to join us at our weekly service at **11am** and invited to share fellowship afterwards with a cup of coffee/tea.

4th December - Mr Richard Blackwell

11th December - Rev Kevin Taylor (incl. Holy Communion)

18th December - **11am** Mr Ian Couchman

6.30pm Carols - Rev Kevin Taylor

Christmas Day - Family Service - Mr Dudley Shipton

1st January - Mr Terry Preston

RHODES MINNIS CHURCH

This small Chapel in beautiful countryside holds a weekly Sunday Service normally at **9.30am** followed by coffee and biscuits. A warm welcome is extended to any visitors.

4 December - Mr. Ralph Bradshaw

11 December - Mr. Jim Wilson

15 December (Thursday) Candlelit Carol Service at **7pm** - Rev. Kevin Taylor

18 December - Rev. Kevin Taylor (incl. Holy Communion)

25 December NO SERVICE

POSTLING CHURCH SERVICES

4 December 3.30pm Afternoon Tea Service

11 December 9.30am Family Service

15 December 7.30pm Advent meditation (Thursday)

18 December 8.00am Holy Communion

19 December 7.30pm Carols by Candlelight (Monday)

24 December 11.30am Crib Service (Saturday)

25 December 9.30am Family Communion



3rd December: St Nicholas Fayre - 10am - Parish Church

9th December: Music on a Friday - 7.30pm - Parish Church

17th December: Saturday Morning Market - Tayne Centre.

18th December: Carol Services: 6pm Parish Church

6.30pm Methodist Church

Every Monday "Knit and Natter" in the Methodist Church

Lyminge Newsletter

Terms & Conditions. Copy deadline is 15th December.

Please email your copy in to the editor (pb@pbarnes20.plus.com). Your payment must be received before your article or advert can appear in the Newsletter. Please leave your payment along with your name, organisation, telephone number and copy of your ad in a sealed envelope at the Lyminge Post Office or at the Lyminge Library. Business adverts cost £9.50 per month or £95.00 per year. Personal and charity adverts and articles from £3 per month, or £30.00 per year. The annual rate offers 12 entries for the price of 10. Please make cheques payable to '**The Lyminge Association**'. If you do not have email, a typed paper-copy can be left with the payment.

Lyminge Association accepts no liability for the accuracy of the advertisements or subsequent actions arising in conjunction with advertisers in the newsletter.

Further details from Peter (editor) on 01303 863737

Balloons For All Occasions

Local Lyminge-based balloon
decorator

Can supply a selection of air- or
helium-filled balloons ready to
be displayed at your event.

Can also provide balloon
modelling for all children's
parties and events.

Contact: 07958 737 977

E mail: info@thechairstresser.com

Collection or local delivery
available

NO JOB TOO SMALL!!

The January edition of the Newsletter will be delivered
later than normal during the 1st week of January as a result
of the Christmas holidays.

Happy Christmas to you all from the Editor - Peter Barnes
and Printer - Adrian Willcox.



WANTED

CLERK TO GOVERNORS

Lyminge Church of England
Primary School

Requirements:

- Attendance at 6 early evening meetings per school year plus added administration time.
- Excellent organisational skills
- Good IT skills
- Ability to produce proficient minutes
- Awareness of confidentiality

Appropriate training will be available.

Applications to:- Tricia Stewart
Chair of Governors

Lyminge Church of England Primary School
Church Road, Lyminge CT18 8JA
Closing date: 12th December

If you wish to discuss this further contact
01303 862008

China China

中國城



Restaurant and Takeaway

Open Christmas Day

£23 per person

12pm to 7pm

Eat as Much as You Like
and select from over 150 dishes

To book your table please call

01303 863 288 or email

jackey@chinachinalyminge.co.uk



Chinese New Year



2017



Year of the Rooster

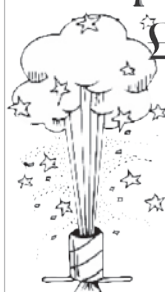
Come and Celebrate on
24th, 25th or 26th January

Special 5 course meal

£29 per person

see the Lion Dance
and enjoy the
Fireworks

Booking essential call
01303 863 288



District Councillors Report - December 2016

From your District Councillors

We are both delighted with the news on 04 November that Shepway's bid for Government support for a new garden town at Otterpool Park has been successful. As a first step the Government has given Shepway £750,000 towards the planning costs with the promise of more funds to help make the plans a reality. Just as importantly the garden town status means we will have Government backing in dealing with all the organisations we need to get the infrastructure and services in place like Network Rail, Southern Water, etc.

The garden town is a project that will benefit the whole district because it will allow us to deliver the housing that we need in a way that minimises the pressure on existing communities. Instead of allocating the equivalent number of houses across every town and village in the district we can provide the schools, medical facilities and other infrastructure that the new housing will require in one place and build in line with local need. It will bring an income to the council in the long term which will help us continue to deliver services to everyone. There will be new publically accessible green space which will be open to all not just those who live at Otterpool Park. Most importantly it will provide much needed homes for people at every stage of their lives – starter homes, family homes, homes to downsize to and 'extra care' homes for people to live independently in frail old age.

There's more information on the Shepway website and we will keep you updated on progress. We are also happy to meet with people on an individual basis if they contact us directly. There will be plenty of opportunity for people to be involved in shaping the plans. It is unlikely any homes will be built before 2020 and the settlement is expected to grow over the following 30 to 40 years in line with our population (the principle pressure being all of us living much longer and not freeing up homes for the younger generations).

Last month we both joined a further Study Tour to learn from other housing developments. We visited Horton Park, Chatham, St Mary's Island, part of the Chatham Dockyard Development, Ingress Park, Greenhithe and Kings Hill West Malling. We talked to people who lived there and found them overwhelmingly positive about their homes. The one challenge nowhere appeared to have solved was parking although Ingress Park had a frequent and well connected bus service which helped keep car use down. All this will help inform the masterplan for Otterpool Park.

Jenny, with East Kent Housing Officers and a representative of the Tenant & Leaseholders' Association carried out a site inspection of East Kent Housing stock in Lyminge, Stelling Minnis, Etchinghill and Sellindge. This is a once yearly external inspection to highlight maintenance issues. She also attended the Lyminge Dramatic Society's performance of Neighbourhood Watch and congratulates all involved for an excellent event.

Susan joined one of the Speedwatch sessions at Etchinghill on 27 October. The new equipment (which she helped part fund with a KCC grant) picks up speeding at a greater distance. Kent Police have been using the data from Speedwatch to target speeding in our area so thank you to all our volunteers for identifying the scale of the problem and ensuring we have the evidence to get backing from the Police.

Thank you to whoever sent us the photo from the Lyminge Parish Council Good Citizen awards in September. It was good to be reminded of the large number of people who do so much for our community.

We wish you all a Merry Christmas and Happy New Year.

Susan Carey and Jenny Hollingsbee, ward councillors for North Downs West, Shepway District Council

Jenny Hollingsbee (Jenny.hollingsbee@shepway.gov.uk 07887918458) Susan Carey (susan.carey@shepway.gov.uk 01303 670561)

HOUSE FOR RENT

2/3 bedroom detached cottage in idyllic, but not secluded location. Secure property near Lyminge. Parking, garden and fabulous views. Would suit professional couple. £900 PCM. 07875293972.

Mount Pleasant Close Christmas Lights

As you may be aware for the last few years Mount Pleasant Close has had a Christmas lights display and we have collected donations for various charities, MS Society, Cancer Research and British Heart Foundation. Last year we collected a grand total of over £600!

This year we will be continuing the tradition and the 'Grand Switch On' will be on Sunday 4th. December at 5pm. There will be sausage rolls, mince pies and other refreshments available so please come along and enjoy the lights.

We are aware that there is limited parking available in the Close so people from the village have been requested to walk to the 'switch on'.

We hope you have a Happy Christmas and thank you for your continued support.

Paul - No. 26 & Graham - No. 29

Lyminge Dramatic Society



A huge thank you to everyone who supported our production of Neighbourhood Watch; a very successful production. Our next show is going to be *'The Vicar of Dibley'* in early April 2017, directed by Mike Chisnall. By the time you read this the production will have been cast. It promises to be a highly entertaining production- more details in future newsletters.

For the first time we are providing an outreach entertainment called *'Christmas Cheer'* at the *Ashford Pilgrim Hospice* on 14th December at 2pm for the benefit of patients, visitors and staff. The company will be providing readings, monologues, carols and poems introduced by our very own Leonard Sachs (Mike Chisnall). If you are visiting the hospice on that day do join us in the day room.

Lyminge Dramatic Society would like to wish everyone a Merry Christmas and a Happy New Year.

Rhodes Minnis Circle

In October some of our friends from Elham joined us, and we were entertained by Alan Haines, who presented music and film from the 70's as well as some magic tricks, causing much laughter. The competition was won by Daphne Andrews, with Paula Peers 2nd, Pat Kent 3rd, and Marilyn Norton 4th.

On the 14th December we are having our members' Christmas party starting at 2.30pm. We will have entertainment as well as a Bring & Share tea.

We wish all our friends a very merry Christmas and a happy and healthy New Year. There is no meeting in January, but for further details please contact Marion Hoare on 862913

Lyminge Weather Statistics – October 2016

With thanks to Mr D. Godden for these weather statistics and notes.

| | Temperature (°C) | Air Pressure (hPa) | Wind Speed (mph) | Total Monthly Rainfall |
|---------|--------------------|---------------------|--------------------------|------------------------|
| Maximum | 20.5 (31/10/16) | 1030 (17/10/16) | Gusts 35.0 (15/10/16) | 30.10mm |
| Minimum | 1.9 (22/10/16) | 999.0 (30/10/16) | Highest Daily Rainfall | 6.0mm (10/10/16) |

Below average rainfall. For the three months (Aug/Sept/Oct) total 144.1mm - the lowest for this period since 1976

The Big Fat Christmas Quiz Saturday 3rd December 7pm Etchinghill Village Hall

£3 Per Person, Max 6 Per Table
Prize For Winning Team
Enjoy The Build Up To Christmas

Price Includes Crackers

Bring Your Own Refreshments

Phone John to book and for further details

01303 863819

Charity No 302736



Poppy Appeal and Remembrance

On behalf of the RBL Poppy Appeal, I would like to thank everyone in the Elham Valley for their generosity towards this year's Poppy Appeal. Although not all monies are yet in, the current total stands at £11,065.33 which is a wonderful result. In Lyminge alone, the total figure is £2045.90 which includes a magnificent collection from the school of £265.55. I thank you all sincerely, as your kind generosity will help to enable the RBL to continue its vital work in supporting our armed forces.

I would also like to thank the children of year 6 at the village school who held a moving and valuable service at the war memorial on Friday 11th November. This was attended by some villagers too, and the RBL Elham Valley Branch would like to express their gratitude and appreciation for your support.

The next meeting of the RBL Elham Valley branch will be on Thursday 1st December 2016 at 7.30pm at Age UK Lyminge. David Whitethread will be giving a talk entitled "Memorials of the Lost Sons of Elham and Lyminge." Everyone is welcome and admission is free with a donation towards the refreshments.

Susan Foster, Poppy Appeal Organiser, Elham Valley

Etchinghill Update December 2016

MERRY CHRISTMAS TO ALL THE RESIDENTS OF ETCHINGHILL

VILLAGE HALL NEWS by John White

OPEN HOUSE every Monday from 10.00 – 12.00 am, refreshments will be available. There will be no speaker this month but we will be having a Christmas lunch at the Golf Course on the 12th December. For further details please contact Wendy on 863495.

ETCHINGHILL HILL VILLAGE MARKET - There will be two markets in December on Saturday the 3rd and the 17th. Don't forget to get there early to get some Christmas bargains. There will be no Market in January. The raffle in November was won by Judy and Ray of Etchinghill.

BIG FAT CHRISTMAS QUIZ – Saturday 3rd December. Come along and get into the Christmas spirit. Tables can be reserved by phoning John on 863819/07342986258. Don't leave it too late.

ETCHINGHILL RESIDENTS' ASSOCIATION by Dave McCombe

BIG THANK YOU to the ERA committee and local residents who have volunteered throughout the year to support our various events and activities; this wouldn't have happened without you. The ERA AGM will be held on Sunday 4th December at 7.00 pm in the village hall. Interested or concerned about what is happening in the village, come along listen and have your say?

CINEMA CLUB – There will be no cinema club in December. The next date will be 16th January 2017 when they will be showing "The Finest Hours".

SPEED WATCH by Colin Manvell

Our teams are now using an updated monitor, with surprising results. During the session 17th –28th October 71 motorists were recorded driving in excess of the speed limit. These generated three letters of advice for second detection of mid-range speeding.

THE GATEKEEPER

There will be Live Music every Sunday evening in December. Come along and listen.

NEW YEAR'S EVE CELEBRATIONS. Saturday 31st December – come and listen to the King Ziggy Band. Tickets are £20.00 per head and will include a buffet and bubbly at midnight.

CHRISTMAS QUIZ - Keep an ear out for further news (the date has yet to be decided).

CHRISTMAS CAROLS - 22nd December – there will be a Brass Band playing carols from approx.7pm.

COMMUNITY CAROL SINGING 24th December - 4pm with mince pies and mulled wine

If you wish to include an entry into the Etchinghill Update please contact Barbara on 862873



I would like to announce that Kara has returned back with the girls at **Snippers and Clippers** in Lyminge. If you would like to book an appointment with Kara, you can call the salon on 01303647222 or on our Facebook page. Regards Tracey and the girls.

Pam Ferris launches £2 million appeal for Greenbanks House - Barham, part of the Fifth Trust

TV and movie actress Pam Ferris (TV roles in *The Darling Buds of May*, *Rosemary and Thyme* and *Call the Midwife*, and in the films *Harry Potter* and the *Prisoner of Azkaban*, *Children of Men* and *Matilda*) formally launched The Fifth Trust's £2 million appeal to provide new educational and life skills facilities for Kent adults with learning difficulties at its Greenbanks site, Barham. The Fifth Trust includes Broadstreet House, Lyminge and Elham Vineyard, Barham.

For the past 25 years, The Fifth Trust has provided safe and fulfilling day care facilities for adults with learning difficulties. Operating from two sites in the Elham Valley, the charity currently supports 126 students from Swale, Canterbury, Thanet, Dover and Shepway, who are encouraged to develop essential life skills, as well as the confidence to make informed personal choices about their own lives. This is achieved through enjoyable and productive work in the local community and in the charity's Vineyard Garden Centre and Café, complemented by a broad range of creative, horticultural and academic activities.

Fifth Trust General Manager Nikki Marley says: "The Greenbanks project will deliver an improved and sustainable facility that reflects best practice in the operation of learning environments for adults with learning and physical difficulties. It will also enable us to increase our student numbers by at least 20% and to provide better support for adults with dementia, helping them to enjoy healthier, happier and more fulfilled lives. The environmentally efficient buildings will reduce our carbon footprint and maintenance and utilities costs and will increase employment in a rural area."

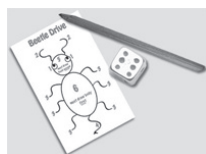
The Fifth Trust has secured planning permission to create four new interconnected 'pavilions' at Greenbanks for IT and Design, Art and Horticulture plus a central 'amenity hub', a shared space that will be used for breaks and meals, as well as special events.

Rhodes Minnis Village Hall
Christmas Beetle Drive
Friday 9th December



at the Hall 7.30pm
 Adults £2 – Children 50p
 Bring and Share food

Teas, coffee and juice provided
 There will also be a raffle
 Come & enjoy an old-fashioned fun evening
 New players very welcome.



ETCHINGHILL CHRISTMAS MARKETS

Saturday 3rd & 17th December

10am -12.30pm

Plenty of free parking

Christmas Stalls

Local produce

Local meat

Home made pies & cakes

Free car park

Tea or coffee 50p

ETCHINGHILL VILLAGE HALL. Charity No. 302736



JANUARY SALE

Books Books Books

Friday 20th January

Saturday 21st January

10.00am to 12.30pm

St Mary & St Ethelburga Church, Lyminge

TEA AND COFFEE
 For church funds

Book Sale



WANTED: Wonderful People Needed

Would you like to make a difference to somebody's life on Christmas Day?

Christmas Day Lunch Club

Making Christmas Day alone a thing of the past

Can you spare a little time for any of the following? We need people to - pop a few extras in the oven and bring them to the hall, make sandwiches, sausage rolls, mince pies, etc. for a take away tea, pick people up and take them home, help decorate the hall on Christmas Eve, cook and serve lunch, help clear up afterwards. And most importantly bring good cheer to all who attend. We can guarantee that you too will have the best Christmas ever!!

For details, please ring: Sam 01303 863256



CHRISTMAS MARKET



17th DECEMBER

COME ALONG AND MEET MICKY AND MINNIE

MOUSE, ELSA AND OLAF

Photo Opportunities available

10am - 12noon

Tayne Centre Church Rd Lyminge

GIFTS * CRAFTS * PRESERVES * JEWELLERY

Refreshments available

BINGO AFTERNOON

Saturday 3rd December

1.45pm for 2pm start

Lyminge Bowls Clubhouse

Woodland Road CT18 8EW

Cash Prizes, Raffle

and Refreshments

All over 18's welcome

Enquiries Tel: 01303 862467



The January edition of the Newsletter will be delivered later than normal during the 1st week of January as a result of the Christmas holidays.

Happy Christmas to you all from the Editor - Peter Barnes and Printer - Adrian Willcox.



Lyminge Hand Bells

Christmas will soon be upon us and we have already been practicing hard with new music created especially for this very special time of year. To hear us, come along to St Nicholas Fayre on the 3rd December or Sibton Park on the 8th. We shall be performing as usual Christmas Eve at both the Crib Service and Midnight Mass.

After Christmas we shall take a short break. If you think the sound of hand bells would suit a special occasion being planned please contact us. We have an increasingly wide selection to choose from. All we need at the venue is a large table for our bells and music, room for up to 11 players and a minimum donation of £40 for our charity, the Nepali Children's Trust. A small contribution to travelling costs is also appreciated for bookings more than 5 miles from Lyminge. Weekends and evenings only please and plenty of advance notice is helpful as we are already receiving bookings. Want more info or make a booking?

If you would like more info or make a booking, please call **Ro Edmond on 863201** or email **welldorm@aol.com**

Christmas Food & Craft Festival



ELHAM SQUARE & CHURCH
Sunday 11 December 12 - 3.30pm

SHOP - 30+ stalls selling delicious local food & gorgeous handmade gifts

Plus - Refreshments at the Church Chancel Cafe & Kings Arms
Music by award-winning Elham singer Meg Rutherford

Meet  Santa in his shepherd's hut

We hope to see you there!

elhamfarmersmarket.co.uk



LYMINGE HISTORICAL SOCIETY



Just in time for
Christmas!!



Our latest book!

The Lyminge Historical Society announces the arrival in the shops of Part 8 of the LYMINGE a history series.

For the first time we have produced a volume in full colour and it can be bought from the Lyminge Food and Wine Store or the Lyminge Post Office Store.

Part 8 is £7 per copy.

Currently previous volumes can also be bought as follows:

Parts 1 to 5 at £5 each,

Parts 6 & 7 at £6 each,

or the full eight part set for £37, a £7 discount.

For a full set or if you want the books to be posted, please call 01303 862865.

P&P is based on the weight of the books bought and the postal costs to the destination.

Lyminge Friends

In **November** Janet McDonald gave us an excellent talk on *The Language of Music* and Fran's Mince Pies were much appreciated. On 17th we went to the new Folkestone Garden Centre at Swingfield and had a very enjoyable lunch.

On 7th December **Rosemary Piddock** will give a light hearted talk *'Tis the Season to be Jolly* before we have our *Winter Lunch with Secret Santa and Raffle*. At the end of the year, we are going for our regular **New Year's Eve Lunch in China China**. Our first meeting of 2017 is on **4th January** and we start the year learning *Why is recycling important and where does it go?* - a talk by Brian Rumbelow from Shepway District Council, and this meeting is followed by Christmas Lunch in the **Coach and Horses**.



Meeting are 10.30 - 12.30 in the Rigden Room of the Tayne Centre. Entry for 2016 is £2.00 which includes light refreshments. Unfortunately we have had to raise our entry fee to £3.00 from 4th January 2017. We are a friendly social group and welcome new members so just drop into one of our meetings, or, if you'd like to talk to one of us first, please call 863500.

In aid of the **LORD WHISKY SANCTUARY FUND**
(Registered Charity 283483)

Park House Animal Sanctuary
Stelling Minnis CT4 6AN Tel: 01303 862622

We would like to take this opportunity to thank everyone who has given homes to our animals this year. We would also like to thank our loyal supporters and friends, new and old, for their support throughout 2016.

We wish you all a very Happy Christmas and a Peaceful New Year and look forward to seeing you all again in 2017

Our first event of 2017 is our
Fur, Feather & Exotic Exhibition
on Saturday 25th February, 10am-4pm at
Boughton-under-Blean Village Hall.

Absolute Financial Management

Daniel Stapley CeMAP

Independent Mortgage Advice

Initial Consultation Free!

Tel: 01303862568 or 07813030611

www.afmanagement.co.uk



Alex Allfree Electrician

Man of Lyminge
20 Years experience

Tel 863415 Mobile 07887790812



CANTORES

Musical Director: Adrian Bawtree

An Evening of Christmas Music

Sibton Park, Lyminge

Friday 16 December 7.30 pm

Programme includes:
A Ceremony of Christmas Carols
Benjamin Britten

By Ticket only. £8.00
Including refreshments
Box Office- Laing Bennett,
Lyminge

www.cantoresdominicae.co.uk
charity no. 1087409

Supporting our
annual charity



Christmas Day Lunch Club

Christmas comes but once a year. On your own, no joy? Oh dear - come and join us at the hall and make Christmas Day the best of all!!

We are running the **6th Annual Christmas Day Lunch Club** and are welcoming new members

For: Traditional Turkey Dinner and company

Where: Lyminge Village Hall

When: 25th December: 11am

Who: Anyone who is spending Christmas Day alone (couples also welcome)

Book by 18 th December

For further details, please ring: Sam/Kirsty
01303 863256



Help your child go far with Kip McGrath

Our qualified teachers create individual tutoring programmes for your child, using proven Kip McGrath methods.

✓ Maths ✓ GCSE Maths specialist
✓ English ✓ 11 Plus

Call today for a FREE assessment

kipmcgrath.co.uk

Folkestone & Hythe Centre
17, Manor Road, Folkestone, CT20 2SA
01303 249 100
folkestonehythe@kip-mcgrath.com

Kip McGrath
EDUCATIONCENTRES



theWI INSPIRING WOMEN

Members were welcomed to the November meeting by the President, Barbara Syrett. A birthday posy was presented to Joy Bartley and Mary Hickmott. Mary is at

present in hospital recovering from an operation and everyone sends her their very best wishes and hopes she will soon be feeling better and makes a speedy recovery.

We then had the annual general meeting with Barbara Syrett and Rita Warner reading reports from the past year. After that, Alan Haines entertained us with some very amusing slides and music with clips of old silent films. He also demonstrated some illusion tricks with help from some of the members, very clever but hilarious.

The usual delicious tea followed, hostesses being Julia Tappenden, Gill LeCras, June Price and Chris Marshall. Our next meeting is our Christmas party which will be held on Tuesday, December 13 at 2.30pm in the village hall.

Please contact Barbara Syrett on 01303 265229 or Rita Warner on 01303 863503 for further details.

FAMILY HISTORY Interested in your ancestry?

Lacking the time or expertise to research it yourself? Then give me a call, or email me, to arrange a free, no obligation, initial chat.

Research is undertaken at very affordable rates to suit your pocket.

Clive Stanyon: 01303 840820
07771 922192
stanyonc@aol.com



All are welcome to

Knit and Natter

Every Monday
2.30 - 4pm

Methodist Church/Tayne Centre
Refreshments, Bring and Buy

In aid of Tayne Centre Flat Roof Repairs.



INVICTA WOODWIND ORCHESTRA CONCERT

A festival of Dances for the New Year – an international festival of rhythms and melodies from Vienna to the American South

Saturday 7th January 2017

Lyminge Methodist Church 7pm

Entrance £6 (payable on the door) including refreshments

ALL WELCOME

Bumpy Field Gang (Court Lodge Green) Come and join the work party that meets once a month, on the second Thursday of every month at 10.30 am for approximately an hour and a half. We meet in the Village Hall car park next to the field. We are trying to support the natural habitat by creating biodiversity for plants and animals and to make the field suitable for the community to enjoy. If you would like to help in one of these practical sessions, please come along and lend a hand. You do not have to commit to this every month.

Please note that the ground is uneven so wear good footwear and clothes that cover your skin as there are nettles etc. Bring garden gloves if you have a pair. This project is not suitable for children.

If you want further information please contact Audrey T: 864235 E: abailey447@aol.com



RECRUITING NOW

Would you like a flexible, rewarding career in care?
Are you looking for full time hours? Part time work to fit in around your lifestyle? or to hours top up your weekly income?

Benefits of working in Homecare with Nurse Plus-
Flexible Hours – at times to suit your needs
Excellent Weekly Pay - up to £10.37 per hour, plus holiday pay
Rewarding career – job satisfaction
No experience needed – Start a new career
Free Training – Qualification opportunities
Staff Benefits - Staff Lottery & Plus Points Scheme

Call Nurse Plus today: **01303 250200**
www.nurseplusuk.com homecare@nurseplusuk.com

Free Mulled Wine And Mince Pies

Free Entrance

JOIN US AT ST, MARY'S AND
ETHELBURGA CHURCH, LYMINGE

MUSIC ON A FRIDAY



A CHRISTMAS SPECIAL

Friday 9th December 7.15pm
for 7.30pm

St Mary and Ethelburga Church

Performances of hand bells, ukulele,
instrumentals, Christmas songs,
something for everyone

Hope To See You There



For Sale Mixed Seasoned Logs

Large truckload NOW £80

Free delivery

Tree surgery/stump removal also
undertaken.

Fully insured. NPTC qualified

01227 709562 or 07769 908027

Cambridge

Weight Plan™

Independent Consultant

Anita Adams - Etchinghill

Get back in the picture! With one-to-one support,
you can trust Cambridge Weight Plan.

Call me today for more information about the plan.

I can help you all the way!

Tel: 01303 864254 / 07851614867

Email: anitaadams@live.co.uk

Facebook:

[cambridgeweightplanconsultantsoutheastanita](https://www.facebook.com/cambridgeweightplanconsultantsoutheastanita)

Financial Planning

David Gridley

Chartered Financial Planner

Range of quality advice available from a fully qualified
adviser:

- Pre- and Post-Retirement Planning
- Investment Planning
- Inheritance Tax Plannings

For further information, please contact our local office in
Lyminge

David Gridley APFS

Tel: 01303 863959

Email: davidgridley@sjpp.co.uk

Technical Help When You Need It!

| | |
|-----------------|-------------------------------------|
| Gadget setup | Internet help and training |
| Purchase advice | Security concerns (parental advice) |
| Help with email | TV remotes and tuning |
| | PC & Mac |

For all those little problems you want to sort.

Call Nigel on **01303 647220** or email
nigel@digitaldoctor.me

Experienced and qualified, 20 years in IT. Excellent rates.

Coach & Horses



Senior Citizens 2 course lunches

Available Monday - Saturday £7.50

Friday Food Theme Nights

Not available during December

Christmas Party Menu

3 Courses £21.95 per person

Available 1-23rd December, excluding Sundays.

Please collect a menu for more information

Christmas Quiz Night - Wednesday 28th December

New Years Eve Party & Disco 7pm 'til late

£5 per person (includes first drink & buffet)

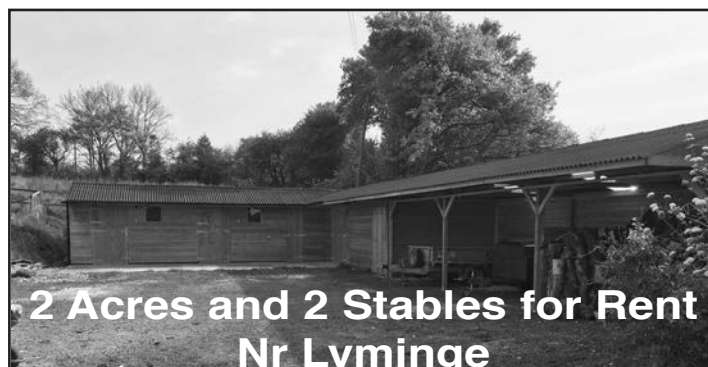
Limited Tickets available from 1st December

More information regarding Christmas/New Year's opening times available at the pub or via Facebook page

Bookings and Contact: 01303 862694

"Don't confuse poor decision-making with destiny. Own your mistakes. It's OK; we all make them. Learn from them so they can empower you!"

Steve Maraboli



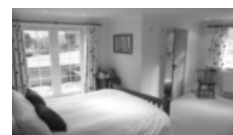
2 Acres and 2 Stables for Rent Nr Lyminge

Two newly built 12x12ft stables, 12x6ft tack room and 18x12ft corner hay barn with automatic water in stables, sink and tap in tack room, plug sockets, lighting and outside tap in yard.

Fields divided into two with automatic water and post and rail fencing all around. Secure private yard with automatic gates and CCTV. Rural location with good hacking.

Please ring 07873 125776 for more information

Bridge Cottage Bed & Breakfast 4 Stars Silver Award



Luxury accommodation in a tranquil setting
Chris & Alison, Shuttlesfield Lane, Ottinge

01303 862933

www.bridgecottagesimplybandb.co.uk

Park House Sanctuary Boarding Kennels & Cattery

Park House, Stelling Minnis CT4 6AN

Brick-Built Heated Kennels ~ Daily Walks
Reasonable Rates ~ Dogs must be fully inoculated
Heated Cat Chalets ~ Quiet Area Inspection Invited.

To book or for further information, call
01303 862622 or email lord.whisky@btinternet.com
www.lordwhisky.co.uk

Shuttlesfield Barn - 4* Gold - Self Catering



Rural location in Kent's AONB
Families and all pets welcome.
Two bedrooms, ensuite shower and wet-room. WiFi. TV/DVD.
Holiday, short & relocation stays.
Heated outdoor pool (Summer)
CT18 8LB 01303 862729
Web: www.shuttlesfieldbarn.co.uk
Email: info@shuttlesfieldbarn.co.uk



Lyminge
Historical Society
Would like to wish you all a very



**MERRY
CHRISTMAS**

Please note, after the Winter Break in January and February the first talk in 2017 will be as below:

Tuesday 7th March in The Tayne Centre
Henry Clifton, a Littlestone Lifeboat Man
Speaker: Rosemary Piddock

New members and visitors are welcome.
Members: £10 per annum inclusive of talks
Visitors: £4 per person payable on the door.
Tea and biscuits will be served.

Please note: Lyminge: a History books
Are still available as a bundle of all 8 books for just £37!!*
To take advantage of the offer please call 01303 862865
This offer is not available from the shops.
*Postage and packaging extra for postal deliveries

Lyminge Historical Society
Mobile Tel. No. 07759 260816
Website: www.lymingehistoricalsociety.co.uk

Letters to The Editor

Dog Fouling....

I live in Skeete Road at the bottom of the track about half way up, where there is a footpath running along the bottom of my track. My track/PRIVATE driveway is not for the use of dog walkers. Every day I am finding dog mess in my driveway where dog walkers have used it as a short cut. A sign will be going up soon informing people that the driveway is private property and not a public right of way. I do not want to have arguments with people but anybody seen using my drive will be reported to the relevant authority. How would you all like to be picking up dogs' mess from your gardens? Please have some respect for your fellow villagers. **Christina Whitehouse. Skeete.**

Otterpool...

Dear Editor

Responding to the third paragraph in Susan Carey and Jenny Hollingsbee's November report I repeat what I said in my letter published on page 11 of the October edition of the News letter.

Whilst my opposition to the Otterpool Newtown Plan has not changed other than to harden, in the company of a friend I am willing to meet with them to hear what they have to say.

Yours Sincerely **Alan Kyte**

Shepway Community and Environmental Network



**The Jubilee Centre, Everist Court
Station Road, Lyminge
Tel: 01303 269602**



Merry Christmas Everybody!!

We wish you all, Clients, Volunteers and our generous local Supporters a very Happy Christmas.

News from the Jubilee Centre.....

The Clients' **Christmas Party** will be on **16th December** and will be held at the Ashford International Hotel. The centre, café and charity shop will be closed on this day. If you would like to join us, please book at the centre or call 01303 269602. The cost is £10 and includes transport, a full Christmas meal and entertainment.

Our **Carol Service** will be held at the centre on **Friday 9th December at 10.45am**. Peter Naylor will be playing the organ. Everyone is welcome to join us. Warm mince pies and mulled wine will be served.

We will be holding **Christmas themed lunches** on **Thursday 1st December, Tuesday 6th, Friday 9th, Monday 12th, & Wednesday 21st**. Lunch will consist of a roast, pudding with a Christmas theme and wine followed by tea or coffee. All for **£5.25**! After lunch on **Monday 12th December** the children from Lyminge Primary School will be visiting to sing carols. All are welcome.

We shall be holding a **Festive Afternoon Tea** at the Hythe centre on **Sunday 11th December 3-5 pm**. Join us for a special treat for a loved one or for you. There will be a selection of homemade sandwiches, scones with jam & cream, a selection of pastries, cakes & mince pies, tea or coffee, in a festive atmosphere, with live background music. Tickets are available now and cost just £10 per person.

The **Charity Shop** will be **Open** on **Saturdays 3rd, 10th & 17th December**. There will be no Saturday opening on 24th or 31st December.

Christmas opening hours - The Centre will open as usual up to Friday 23rd December. We will be **closed** on **26th, 27th December** and **2nd January**. The centre will be open on 28th, 29th, & 30th December as normal.

Remember, the **Home Meals Delivery Service** is available **every day over the festive period**, just call 269602 to order.

Diary Dates:

Seated Exercise sessions are on **Fridays at 11am**

Communion Service - 11am on the **first Thursday**. Support and assistance with transport is available.

Singing for Health sessions are now held most Wednesday mornings. The last session this year will be on 7th Dec and they will restart on 11th Jan 2017.

Chairotics, re-starts on January 7th and thereafter every Tuesday at 11.15am. Chairotics is a fun and lively chair based exercise programme to music designed to improve your mobility, strength, flexibility, and balance. The cost is £2.60 per session and the service is open to anyone who may benefit.

For more information about any of our activities or services please call **01303 269602** and ask for **Matthew** or **Rachel** or why not just pop in and see us?



Lyminge Businesses' Christmas and New Year Opening Hours

| | Fri 23-Dec | Sat 24-Dec | Sun 25-Dec | Mon 26-Dec | Tues 27-Dec | Wed 28-Dec | Thurs 29-Dec | Fri 30-Dec | Sat 31-Dec | Sun 01-Jan | Mon 02-Jan | Tues 03-Jan |
|--------------------------|---------------------------|---------------|-----------------|---------------|------------------------|---------------------------|---------------------------|---------------------------|---|---|---------------|---------------------------|
| | Christmas Eve | | | Christmas Day | Christmas Bank Holiday | | | New Year's Eve | | | | |
| | Christmas Eve | | | Boxing Day | Christmas Bank Holiday | | | New Year's Day | | | | |
| Age UK | Open | Closed | Closed | Closed | Closed | Normal Hours | Normal Hours | Normal Hours | Closed | Closed | Closed | Normal Hours |
| Auto-Economy Garage | Open | 9-12noon | Closed | Closed | Closed | Normal Hours | Normal Hours | Normal Hours | 9-12noon | Closed | Closed | Normal Hours |
| Chemist | 9am - 1pm & 2:30 - 6:30pm | 9am-1pm | Closed | Closed | Closed | 9am - 1pm & 2:30 - 6:30pm | 9am - 1pm & 2:30 - 6:30pm | 9am - 1pm & 2:30 - 6:30pm | 9-1pm | Closed | Closed | 9am - 1pm & 2:30 - 6:30pm |
| China China | Normal Hours | Normal Hours | Bookings only | Closed | Closed | Closed | Normal Hours | Normal Hours | Normal Hours | Normal Hours | Open | Closed |
| Claire's Country Kitchen | 8am-3pm | 8.30am-12noon | Closed | Closed | Closed | Closed | Closed | Closed | Closed | Closed | Closed | 8am-3pm |
| Coach and Horses | Normal Hours | Normal Hours | Bar only 12-2pm | Closed | Normal Hours | Normal Hours | Normal Hours | Normal Hours | Bar - 12pm until late (Ticket admission only from 7pm) Kitchen - 12 - 2.30 | Bar - 12pm-6pm Sunday Carvery Service 12pm-3pm | Normal Hours | Normal Hours |
| Country Bakery | 7.30am-1.30pm | 7.30am-1.30pm | Closed | Closed | Closed | Closed | Closed | Closed | Closed | Closed | Closed | 7.30am-1.30pm |
| Food & Wine | 7:00am-9pm | 7:00am-7pm | 12pm-2pm | 7:00am-4pm | 7:00am-7pm | 7:00am-7pm | 7:00am-7pm | 7:00am-7pm | 7:00am-7pm | 9:00am-12pm | 7:00am-7pm | 7:00am-7pm |
| Laing Bennett | 9am-1pm | Closed | Closed | Closed | Closed | 10am-2pm | 10am-2pm | 10am-2pm | Closed | Closed | Closed | 9am-5pm |
| Library | 9am-12noon | 10am-1pm | Closed | Closed | Closed | Closed | 9am-6pm | 9-12noon | 10am-2pm | Closed | Closed | 9-12noon |
| Newsagents | 7am-10pm | 7am-10pm | 12noon-6pm | 7am-9pm | 7am-10pm | 7am-10pm | 7am-10pm | 7am-10pm | 7am-4pm | 7am-10pm | 7am-10pm | 7am-10pm |
| Post Office | 7am-10pm | 7am-10pm | 12noon-6pm | 7am-9pm | 7am-10pm | 7am-10pm | 7am-10pm | 7am-10pm | 7am-4pm | 7am-10pm | 7am-10pm | 7am-10pm |
| Red Dragon | 8am-4pm | Closed | Closed | Closed | Closed | Closed | Closed | Closed | Closed | Closed | Closed | 8am-5.30pm |
| Snippers and Clippers | 9am-5.30pm | 9am-3pm | Closed | Closed | Closed | 9am-6.30pm | 9am-5.30pm | 9am-5.30pm | 9am-4pm | Closed | Closed | 9am-5.30pm |
| Spicy Touch | 5pm-10.30pm | 5pm-10.30pm | Closed | 5pm-10.30pm | 5pm-10.30pm | 5pm-10.30pm | 5pm-10.30pm | 5pm-10.30pm | 5pm-10.30pm | 5pm-10.30pm | 5pm-10.30pm | 5pm-10.30pm |
| Church Rd Surgery | Normal Hours | Closed | Closed | Closed | Closed | Normal Hours | Normal Hours | Normal Hours | Closed | Closed | Closed | Normal Hours |
| New Surgery, Greenbanks | Normal Hours | Closed | Closed | Closed | Closed | Normal Hours | Normal Hours | Normal Hours | Closed | Closed | Closed | Normal Hours |
| The Clinic - Lyminge | Closed | Closed | Closed | Closed | Closed | until 2pm | until 2pm | until 2pm | until 2pm | Closed | Closed | Osteopathy only |



**"Merry Christmas.....
...and thank you Elham Valley for all your support"**





* Baby Massage * Baby Signing *
* Infant Sleep *
* Feel a Fairy Tale™ *

www.daisychaincourses.co.uk
info@daisychaincourses.co.uk
07800 737 936

Etchinghill Baby & Toddler Group

We are a friendly toddler group, which caters for babies and children from 0 to school age. Crafts, messy play, trikes, toys and a singing session are included each week. In dry weather there is also outside access for the children to play.

We meet on Wednesdays between 10am -12noon at Etchinghill Village Hall. We charge £2 per family, 1st session is free. Tea/coffee and healthy snacks are provided.

If you have any queries please contact

Julia Tesoro 07809705309

Lyminge Baby and Toddler Group

We'd love you to bring your little ones along to our informal and friendly group for lots of fun. Come along and join us for craft, singing and lots more. We meet every Tuesday morning at the Tayne Centre 10.00-12.00, term time only. Cost: £2.00 per session, including refreshments for all.

Call: Any enquiries – **Jenny 0756 4130569**
Sarah 0798 4939220.

E-mail: lymingetoddlergroup@yahoo.co.uk

Rhodes Minnis Toddler Group



We are a small friendly group who meet on Thursday mornings (term-time) 10am-12 noon. First morning is free.

We have a good selection of toys and craft, dough, books and puzzles. Refreshments provided for everyone.

For more information phone **Elaine** on **01303 863096**

Lyminge Library Times

| | | |
|-----------|----------|-----------------------------------|
| Monday | 2-5pm | |
| Tuesday | 9-12noon | Tel: 03000413131 |
| Wednesday | Closed | lymingelibrary@kent.gov.uk |
| Thursday | 9-6pm | |
| Friday | 9-12noon | |
| Saturday | 10-2pm | |



Lyminge Pre-School



'OUTSTANDING – in EVERY CATEGORY'
Ofsted 2016

**We are now open between 8am and 6pm
ALL YEAR ROUND**

We are a well established pre-school with committed, enthusiastic and highly qualified staff passionate about providing the highest standards of childcare.

To arrange to meet the team, please call:
01303 863149 (day) or 07709420736 (eve) or email
lymingepreschool@gmail.com and visit our website
www.lymingepreschool.org.uk

Looking for homecare services?

Our experienced Care Assistants are on hand to offer support to the elderly, people with a learning or physical disability or other care needs for home services no matter your needs -

- ✓ One call a day to multiple calls
- ✓ Short term or long term packages
- ✓ Home from hospital assistance
- ✓ General assistance or complex care
- ✓ Weekday, weekends, days, night call times



Contact your
local branch today
**01303
250200**
www.nurseplusuk.com



PIANO LESSONS FOR ADULTS

Have you always wanted to learn to play the piano but have lacked the opportunity, or faith in your own ability? Did you learn as a child and now regret having given it up?

I specialise in teaching adults and have developed a method which will enable you to progress quickly and with great enjoyment.

Please contact: Lise Cribbin, Bridge 01227 637709



Adult Swimming with Hythe Aqua

- Can you swim lengths (25m)?
- Are you between 17yrs and 70yrs+++++
- Do want to improve your swimming skills?
- Do you want to improve your fitness?

We can help you improve under the direction of our experienced Swimming Coaches. You may want to simply improve your swimming skills and fitness, or even take part in competitions such as Masters Swimming, Triathlons or Open Water – we can help. Two sessions available each week, starting session Fridays at 8.00pm – Hythe Pool.

To book your place phone: 01303 862353 or checkout our website: www.hytheaqua.org.uk

Rhodes Minnis Village Hall

Charity No.800345

Rhodes Minnis Village Hall is located 2kms (1¼miles) from Lyminge and just off Longage Hill and Whitehorse Lane in Chapel Lane

The hall, which holds Hallmark accreditation, is ideal for children's parties, band practice, quizzes, meetings and fundraising events and has the capacity to take parties of up to 100. The rates include the use of the kitchen.

Rates

Mon to Fri £15 per session £40 all day
Sat & Sun £20 per session
£30 for evening session and £60 all day

Sessions

AM session 08.30 - 12.30
PM session 13.30 - 17.30
Evening session 18.00 - 23.45

There are special rates for regular users.

For all bookings and enquires please contact:

Martin Fry 01303 863177 or 07849217793 or e-mail: book @rmvh.org.uk

Sibton Park Cricket Club

We extend an invitation to our local residents, please join us on match days and selected evenings and take advantage of the Club's outstanding venue, facilities and fully licensed bar.

Having a Celebration? Require a regular venue?

The club house and grounds are available

For further information or to make a booking please contact: Adrienne and Steven Rowe 07545 280342 - age-rowey@hotmail.co.uk

Lyminge Village Hall

Registered charity 28145

Large, refurbished, flexible hall with great facilities

From Theatre productions to Weddings, Craft Fayres to Childrens' parties – we've got it all covered!

Capacity: 200 people dancing / audience seating, 100 for table seating, 50 or less for meetings

Well equipped: stage, kitchen, small rooms, ample parking facilities, disabled access

Access to: playground, skate park, large playing field &

Situation: Rolling hills behind and the Church to the front.

Find out how we can help you with your next event:

BOOKING LINE: 07497 625 41

EMAIL: Lymingevillagehall.org.uk

Guideline prices

MAIN HALL HIRE ~ Fri, Sat PM £65

SMALL ROOM ~ £20

EXCLUSIVE ALL HALL ~ £320



Find us on Facebook
or follow us on Twitter @ Lymingevhall



ETCHINGHILL VILLAGE HALL HIRE FEES

The next time you are thinking of holding a function you should try Etchinghill Village Hall, which holds the highest Hallmark accreditation level, with its excellent facilities, including ample parking space.

The standard hire charge for the main hall and kitchen are:

Weekdays £10.00 per hour
Saturdays £12.00 per hour
Sundays £12.00 per hour

During the winter months (1 November to 31 March) a Winter Supplement of £1.00 per hour is added to the above rates.

Special rates apply for weddings and all day events with a range of discounts on the above rates applying to all lettings of more than three continuous hours and additional discounts are available to Etchinghill Residents and Regular Hirers.

The use of a separate Committee Room is also available.

For all bookings or enquiries please contact:

The Duty Manager on 07514-758936



bus times

for buses from Lyminge Post Office to Folkestone Town Centre via Etchinghill & Cheriton High Street

MONDAYS TO SATURDAYS except Bank Holidays

There are route 17 buses at 0705 (not Saturdays), 0749, 0909, 0939 (not Saturdays), 1004, 1034, 1104, 1204, 1304, 1404, 1514, 1614, 1619 (schooldays only), 1654 (schooldays only), 1719, 1749, 1834, 1929, 2113 and 2313.

There are also route 18 buses to Sandling Station & Hythe - for times see our website or call the number below.

SUNDAYS & BANK HOLIDAYS

There are route 17 buses at 0947, 1147, 1347, 1547, 1802 and 2002.

for buses from Lyminge (opposite Aberdeen House) to Canterbury City Centre via Elham, Barham & Bridge

MONDAYS TO SATURDAYS except Bank Holidays

There are route 17 buses at 0727 (schooldays only), 0732, 0752, 0903, 0938, 1028, 1128, 1228, 1328, 1443, 1613, 1703, 1803, 2001 and 2201.

There are also route 18 buses to Canterbury via Stelling Minnis and Bockingham - for times see our website or call the number below.

SUNDAYS & BANK HOLIDAYS

There are route 17 buses at 0827, 1027, 1227, 1427, 1642 and 1842.

These times will operate from 5 September 2016.

timetable information **0871 200 22 33**

Calls cost 12p per minute plus your phone company's access charge

www.stagecoachbus.com



TAYNE CENTRE HALL HIRE

Previously known as the Lyminge Methodist Church Hall

Claydon Hall

1 October to 31 May (including heating) £9.00 per hour : £32.00 per 4 hour session : £64.00 full day

1 June to 30 September

£6.50 per hour : £23.00 per 4 hour session : £46.00 full day

Rigden Room (Parlour) with heating, if required*

£6.50 per hour all year (*electric - over heaters).

Burren Room with heating, if required*

£5.00 per hour all year, (*electric - over heaters)

Overnight Stays

1 June to 30 September £40; 1 October to 31 May £55

For any enquiries please call **07971 722 401**



This page is printed to give readers and organisers the opportunity of planning events without clashing with existing ones, which are already in the 'diary'. It is not intended as a means of advertising and we take no responsibility for errors or omissions. Acceptance is at the discretion of the editor. Please send your updates by email to pb@pbarnes20.plus.com or via methods outlined on Page 2.

Location and name codes follow:

C&H: Coach & Horses; **ECC:** Etchinghill Cricket Club; **EVH:** Etchinghill Village Hall; **ERA:** Etchinghill Residents' Association; **ES:** Elham Square; **JC:** Jubilee Centre; **JF:** Jubilee Field; **LB:** Laing Bennett; **LBC:** Bowls Club; **LL:** Library; **LMC:** Lyminge Methodist Church; **LPC:** Lyminge Parish Church; **LSH:** Lyminge School Hall; **LVH:** Lyminge Village Hall; **LW:** Lord Whisky; **NVH:** Newington Village Hall; **PC:** Postling Church; **PH:** Lord Whisky, Park Hse. **PVH:** Postling Village Hall; **RVH:** Rhodes Minnis Village Hall; **RMC:** Rhodes Minnis Church; **SNL:** See News Letter for info; **TC:** Tayne Centre.

One-Off or Irregular Events

| Date | Time | Event | Where | Tel. No. | Date | Time | Event | Where | Tel. No. |
|-------------|--------|--|-------------|----------|--------------|-------------|--|-------------|-------------|
| 3 December | 10am | St Nicholas Fayre | LPC | | 2017 | 2017 | 2017 | 2017 | 2017 |
| 3 December | 7pm | Big Fat Christmas Quiz | EVH | 863819 | 7 January | 7pm | Invicta Woodwind Orchestra Concert | LMC | |
| 4 December | 5pm | Mount Pleasant Close Christmas Light Switch On | | | 20 January | 10am | Book Sale | LPC | 862073 |
| 9 December | 7.30pm | Music on Friday | LPC | | 21 January | 10am | Book Sale | LPC | 862073 |
| 16 December | 7.30pm | Cantores: An Evening of Christmas Music | Sibton Park | | 25 February | | MUSICAL EVENING: HYTHE TOWN CONCERT BAND | LVH | 862699 |
| 18 December | 6pm | Christmas Carols | LPC | | 18 March | | STREAM CLEAN | | 863737 |
| 22 December | | CHRISTMAS PARCEL DELIVERY | | 863737 | 29 April | | GARAGE SAFARI | | 863737 |
| 25 December | 11am | Christmas Day Lunch Club | LVH | 863256 | 13 May | | LITTER PICK | | 863737 |
| | | | | | 24 & 25 June | | GARDEN SAFARI | | 863737 |

Weekly Events

| Day | Time | Event | Where | Tel. No. | Day | Time | Event | Where | Tel. No. |
|-------------------|---------|-------------------------------|-------|--------------|------|---------|-------------------------------|-------|-------------|
| Mon | 10am | Open House | EVH | 863394 | Wed | 11.45am | Pilates | TC | 07825109670 |
| Mon | 10am | Bridge Club | BC | 863177 | Wed | 7pm | French Conversation | KH | 862972 |
| Mon | 10.30am | Lyminge Larks (Singing) | TC | 01233750223 | Wed | 7.30pm | Cantores Choir | LSH | 07813071867 |
| Mon | 11am | Cookery | JC | 269602 | Wed | 8pm | Scottish Country Dancing | EVH | 862761 |
| Mon | 2pm | Computer Buddy (need to book) | LL | 03000413131 | Thur | 9.30am | Baby Rhyme Time | LL | 03000413131 |
| Mon | 2.30pm | Knit and Natter | TC | 863049 | Thur | 10am | RM Toddlers Group | RVH | 863096 |
| Mon ⁵ | 6.30pm | Ballroom/Latin/Salsa Dancing | TC | 07966 751991 | Thur | 10am | Art Group - Morning | TC | 211364 |
| Mon | 6.30pm | Judo Club | LVH | 862946 | Thur | 11am | Shopping trips to Supermarket | JC | 269602 |
| Tues ¹ | 10am | Baby & Toddler Group | TC | 863274 | Thur | 2pm | Art Group - Afternoon | TC | 862972 |
| Tues | 10am | Baby Signing | EVH | 07800737936 | Thur | 6pm | Ballroom and Salsa Dancing | EVH | 07967979610 |
| Tues | 10.30am | Art Class | JC | 269602 | Thur | 6.45pm | Short Mat Bowls | LVH | 863842 |
| Tues | 11.15am | Chairiobics | JC | 269602 | Fri | 10am | Feel A Fairy Tale Sensory | EVH | 07800737936 |
| Tues | 11.15am | Feel A Fairy Tale Sensory | EVH | 07800737936 | Fri | 10am | Talk Time | LL | 03000413131 |
| Tues | 6.45pm | Short Mat Bowls | LVH | 863842 | Fri | 11.15am | Baby Signing | EVH | 07800737936 |
| Wed | 10.15am | Mature Movers (Exercise) | TC | 862873 | Fri | 11am | Seated Exercise | JC | 269602 |
| Wed | 11am | Singing For Health | JC | 862364 | | | | | |

Monthly Events

| When | Time | Event | Where | Tel. No. | When | Time | Event | Where | Tel. No. |
|-----------------------------------|---------|------------------------|-------|-------------|-----------------------------------|---------|------------------------------|---------|----------|
| 3 rd Mon | 7.30pm | Etchinghill Cinema | EVH | 863333 | 3 rd Wed | 2pm | RM Circle | RVH | 862913 |
| Last Mon | | Parish Council Meeting | SNL | 239500 | Last Wed | 7.30pm | Quiz Night | C&H | 862694 |
| 1 st Tues | 10.30am | Reading Group | LL | 03000413131 | 1 st Thurs | 7.30pm | British Legion, Elham Branch | Age, UK | 862779 |
| 1 st Tues | 11am | Reminiscence | JC | 269602 | 2 nd Thur ⁶ | 10.30am | Court Lodge Green Clean | LVH | 864235 |
| 1 st Tues ² | 7.30pm | LHS Talk/Event | TC | 862972 | 4 th Fri | 7.30pm | Beetle Drive | RVH | 862616 |
| 3 rd Tues | 9.45am | Family History | LL | 03000413131 | Last Fri | 1.30pm | Team Quiz | JC | 269602 |
| 3 rd Tues | 2.30pm | Etchinghill W.I. | EVH | 863503 | 1 st Sat | 10am | Village Market | EVH | 863819 |
| 3 rd Tues ³ | 7.30pm | Gardening Society | TC | 862264 | 2 nd Sat | 10am | Postling Ch. Coffee Morning | PC | 863536 |
| 1 st Wed | 10.30am | Lyminge Friends | LMP | 862598 | 3 rd Sat | 8am | Saturday Market | TC | 862164 |
| 2 nd Wed | 10.30am | Mothers Union | NP | 862221 | | | | | |

¹ In term time only ² Except Jan, Feb, July and August ³ Except Jan, Feb, Aug ⁴ Except Aug and Dec ⁵ Except Bank Holidays ⁶ Starting September

Out and About

Do you have any photos of local events or local groups in action, please call 01303 862699. Give your group a FREE plug !



A couple of action pictures from the **Lyminge Dramatic Society's** excellent production of Alan Ayckbourn's "**Neighbourhood Watch**". How many villages can boast at least two live theatre productions each year ?!



⬆ Luther (played by Matt Nixon) takes a swipe at Martin (Michael Blinston Jones) while Hilda (Jenny Gasson), Dorothy (Jan Roberts) and Magda (Kate Miller) look on in horror.

"I think I saw something outside !"
Rod (Roger Hargreaves) just about to leap into action while Gareth, (David Vale) looks on. ➡



Lyminge Scouts, Guides, Brownies and Cubs at the Remembrance Sunday Service on 13th November. A beautiful morning that saw record numbers attending the service.

Mystery Photo

Last month's picture was the Belisha Beacon on the East side of the Zebra Crossing near Mayfield Road.

Where would you see this set of steps ?



The Christmas Craft Fayre at the **Elham Valley Line Trust** with the Handbell Ringers from St. Martin's Church, Horn Street. Well done to everyone for carrying on after the marquees were destroyed in the storm.



Father Christmas managed to call in to Lyminge on 24th November to switch on the big tree outside Laing Bennett's once again. The Lyminge Association provided the mince pies, mulled wine - and artificial snow - whilst Lyminge Library also supplied refreshments.

D.M.B. Plastering

All aspects undertaken
Interior. Exterior. Plastering. Rendering.
Coving. Ceilings Wall. Floors
Finest quality assured. CSCS Certified.
26 years experience.
Free estimates. Reliable service. Fully insured.
Call David on 07818 607209

P Davis + Co

General Builders and Roofing Specialist
All work undertaken
Call for free estimate

Tel: 01303 863049 or 0784 6769643

Personal Computing

For straightforward I.T. advice, solutions
and training

Contact: **Steve Ashman**
862869
sra@ashman-consulting.co.uk



CARE FOR YOUR FEET

IAN COX MSSCh MBChA CHIROPODIST
at AGE UK HYTHE AND LYMINGE

Treatments include toenail cutting, corns, hard skin, fungus and more
Prices from £12.00

For further information and to book an appointment
'phone 01303 269602



Wilco Plumbing & Heating

Central Heating Installations & Repairs
Gas & Oil Boiler repairs & replacements
5 Year Guarantee on Worcester Bosch Boilers.
Local Experienced Engineer, Emergency plumbing 24/7 call out
Registered with the Institute of Plumbing
Gas Safe Registered-OFTEC Registered
01303 862173 07860 452640
paul@wilcoplumbing.co.uk www.wilcoplumbing.co.uk

TOBY'S TREE SURGERY

Thinning - Reducing - Maintenance - Felling
ALL TREE WORK, BOTH PRIVATE AND COMMERCIAL,
UNDERTAKEN BY OUR NPTC TRAINED OPERATIVES
Professional Friendly Service

FREE ESTIMATES - FULLY INSURED
Contact Toby Griggs:
07854 098 395 or (01303) 863642

D. SCRIVENS

PLUMBING & HEATING
Oil Fired Boiler Installation,
Commissioning, Service and Maintenance.
Unvented Hot Water Systems - Solar Water Heating
Central Heating - Water Softeners - Bathrooms - Showers - En suites
Approved 'Aqualisa' Installer
WATER INDUSTRY 'APPROVED PLUMBER'
FULLY INSURED
07810 897076 scrivensplumbing@aol.com

East Kent Foot Care

Mobile Foot Health Practitioner
Jo Shapter BSc (Hons), MCFHP, MAFHP

Treating and managing common foot problems,
corns, callus, verrucae, thickened nails,
toe nail management, fungal problems,
diabetic foot assessments etc.

Call: 07745 532075

Member of the British Association of Foot Health Professionals



Total garden care for all your needs

TIM MILLETT

Grass Maintenance, General Gardening, Small & Medium
Size Tree Work, Stump Grinding and Wood chipping
Fencing Repairs & New Installations
Turfing, Hard & Soft Landscaping
Free Estimates - Fully Insured
01303 863676 07752 880583
Email: info@tmhorticulture.co.uk



Respiratory
Rehab
Bringing health home

Providing private community respiratory
physiotherapy, general physiotherapy and
rehabilitation to East Kent

T: 07904482097

E: kris@respiratoryrehab.co.uk

W: www.respiratoryrehab.co.uk

Kris Bahadur. Chartered Physiotherapist.
MSc Physiotherapy, BSc (Hons), MCSP, SRP

N.P.C.

Domestic Appliance Services

Service and repair of washing machines, tumble driers,
dishwashers, cleaners and small electrical work. For a
prompt and friendly service

Call Neil Collard 01303 892234 or 07798716044
or **www.npcdomesticapplianceservices.co.uk**

Auto Economy Centre
Fully equipped Mechanical Repair & Service Centre
with the latest diagnostic equipment
MOTs £44.95

01303 863656
Orchard Garage, Canterbury Rd, Etchinghill
www.autoeconomycentre.com

Old English Pine

Antique, repro pine, oak and French-style painted furniture with beautiful and reasonable priced accessories to make
your house a home. Bespoke pine units made to order. Huge shop - over 3 floors. Open 7 days a week.

Tel: 01303 248560 www.oldenglishpineinkent.co.uk 100/102 and 90 Sandgate High Street, Sandgate



**Lyninge
Country
Bakery**

01303 720126
www.lyningecountrybakery.co.uk
baker@lyningecountrybakery.co.uk

A Selection Of Our Produce

- Traditional Loaves
- Low GI Bread
- Sweet Products
- Mini Loaves
- Artisan Bread
- Baguettes
- Specialty Loaves
- Savoury Products
- Bakery Specials

Local Ironing Lady
Smart, Friendly Service

smartpress
SERVICES

Free delivery & collection – min order £10
Cleaning service also available

Call or text - 01303 864229 / 07702 321686
tash@smartpressservices.com

✂ SNIPPERS & CLIPPERS ✂ UNISEX HAIR SALON

LYMINGE SALON

Facial Waxing : Gents Welcome : Shellac Nails
Free WiFi : Appointments not always needed

01303 647222 : info@snippersandclippers.co.uk
Station Road, Lyninge, CT18 8HP

T. Metcalfe Fencing Contractors

Approved Expert Installer for Jacksons Fencing
Established over 30 years
Fully insured - Highly experienced teams



Panel fencing, gates, decking, pergolas, post & rail,
stock fencing, security, landscaping & tree surgery.

01303 840201 07790 290 155

metcalfefencing@btinternet.com
Proprietor - Derek Burr,
Ash Ridge House, Elham



OAK
creative



we're at Newingreen, call for a chat on 01303 812848

www.oakcreative.net

Advertising
Branding
Digital Design
Illustration
Marketing
Print Design
Web Design & Development

**KENT & SUSSEX
HOLIDAY COTTAGES**



With over 250 properties in this region and an expert local team, call now to book
your break or to talk to one of the team about letting your property for holiday rentals

— 01304 619 444 —

www.kentandsussexcottages.co.uk • info@kentandsussexcottages.co.uk

12 King Street, Sandwich, Kent CT13 9BT



SPRING RISE PET CARING SERVICE

DOG WALKING, PET FEEDING, PET VISITS & MUCH MORE!

Whether you need me regularly, short term or occasionally, I
provide a reliable, caring service for you and your pets.

Experience of working with a range of animals from small
mammals to large farm animals

Free (no obligation) consultation. CV & references available.

Fully insured and security screened. Contact me (7 days a week)

Mobile: 07582407637 Email: susannahparkin@googlemail.com

Website: www.thespringrise.co.uk

Essential Beauty

reflexology : aromatherapy : collagen mask facials
non-surgical perceptor : facials : cuccio gel varnish
manicures & pedicures : waxing & eyelash/brow tinting

Therapist with 20 years experience

Call Janene Moat 01303 840052

The Limes, High St, Elham.

Free eyebrow tidy for new clients.



Mini Digger and Operator for Hire

Call Mick for a competitive
quote

Mobile: 07979881873

Landline: 01303862079

Email: mickattwell@aol.co.uk

VICTORIA'S HAIR AND BEAUTY SALON

2 Cullings Hill, Elham, CT4 6TE



Manicures, Pedicures, Facials, CND Shellac,
Spray Tans, Massage, Hot Stones, Waxing,
Pamper Days and Kids Parties.

Gift Vouchers available.

01303 840 931 / www.victoriashairandbeauty.com



FOLKESTONE 01303 210335 | HYTHE 01303 261557 | TENTERDEN 01580 763278 | ASHFORD 01233 613613

SALES / LETTINGS / MANAGEMENT / HUNTERS.COM

HUNTERS
HERE TO GET YOU THERE

Experts in rural and village
properties throughout
south Kent, we'll promote
your home to a wider
audience with over 170
branches throughout the
country including London.
National recognition,
local expertise.



Sarah de Rougemont

Craftsman/Co-ordinator

UPHOLSTERY

All commissions considered
01227 455841 or 07973 377817



Are you running out of space and need an extension?
Or perhaps you would like to remodel your house?
Friendly local architect available to help you realise your dream home.

For a no-obligation consultation, contact Salma Barwani at ruddbarwaniarchitects@gmail.com or call 07770 196190





Ralph Allard Chimney Sweep



All chimneys, boilers and stoves swept.
Brush and Vacuum. Certificates issued.
HETAS and NACS registered, fully insured.

Member of National Association of Chimney Sweeps

01303 844465 or 07813716654

REGISTERED OSTEOPATHS & MEDICAL ACUPUNCTURIST

Adam Price B.Sc Hons (Ost) Katie Price B.Sc Hons (Ost)

The Clinic 01303 863359 or mob: 07980 897382

- Treatment of lower back pain, both acute and chronic
- Treatment of tension/cervical type headaches both acute & chronic
- Treatment of various stiff & painful arthritic conditions
- Treatment of sports injuries, both soft tissue & skeletal
- Deep tissue back, neck & shoulder massage for symptomatic relief

The cost of your treatment may be recoverable from your insurers. Please check

THE CLINIC
Garden Suite
Pendragon House
4 Station Road
Lyminge
Kent CT18 8HP
01303 863359



info@theclinic-lyminge.co.uk
www.theclinic-lyminge.co.uk



Sunhouse Electrical

Your local reliable Electrician

Part P Registered & Elecsa Approved

On Electrical Safety Register & Fully Insured

For a free quotation call James on

01303 766333

www.sunhouse-electrical.com



GOSBEE CONSTRUCTION Fencing - Gates - Paving

35 years experience. Jacksons Expert Installer

Call Martin Gosbee

07974 835511 01303 863337

martin@gosbee1.orangehome.co.uk

Figures 4 Business LLP

Plan – Monitor – Control



Denise Roberts ACIS, ACMA

- Business plans and budgets
- Bookkeeping and payroll services
- Financial reporting & monitoring
- Qualified Company Secretary
- Qualified Management Accountant
- over 25 years experience

T: 07511 097707

E: droberts@f4b-kent.co.uk

W: www.f4b-kent.co.uk



MANOR
VETERINARY CLINIC

We care for them all, great and small

Lyminge Clinic: Methodist Church Hall
Monday, Wednesday & Friday 4-6pm

01303 273203

www.manorveterinaryclinic.co.uk

STERRY'S

*Independent
Funeral Director*

01303 272525
93 Cheriton High Street
(opp Co-op)

01303 264400
41 High Street, Hythe
(opp Lloyds Bank)

Always here for you; 24 hour service. Home visits on request.
Choice of pre-paid funeral plans

KEEP CALM AND LOSE WEIGHT NOW!



- Tasty & healthy weight loss smoothie shakes
- Velvety vanilla & cheeky chocolate flavours
- Only £1.39 per meal serving
- Sugar-free healthy children's milkshakes!
- Complete family nutrition
- 100% fruit & vegetable-based backed by research

www.willwright.transform30.com

Try the 30 day challenge!

Tel: **01303 863460 or 07905 031850**

Red Dragon I.T. Ltd.



- Windows, Mac & Linux Systems
- PC Health Checks
- Wired & Wireless Networks
- Website Design
- Graphic Design

T: 01303 723456 | E: info@rdit.co.uk | www.rdit.co.uk
2 Station Road, Lyminge, Folkestone, Kent, CT18 8HP

LYMINGE FOOD AND WINE 01303 862225



We are here to serve you
Mon. – Sun. 7:00am to 9:00pm
including Bank Holidays
National Lottery Here



South East Aerial & Satellite Solutions Digital – Freeview – Satellite – Aerials

Supply and fit of quality digital installations, FREEVIEW, SKY,
aerials, poor reception and problem solving, upgrades and
repairs by fully accredited engineers

Free quotations and advice, fixed prices, fully insured

Freeview

NO CALL-OUT CHARGE

freesat

07968 659404 - 07825168010 - 01303862361

THE COUNTRY FENCING COMPANY

Local fencing company supplying and fitting timber fencing, trellis, gates and concrete posts
for homes and businesses. We are friendly and reliable so please contact us for a free quote.

Email :- info@thecountryfencingcompany.co.uk

Website :- www.thecountryfencingcompany.co.uk Tel :- 07519 590941



COUNTRY FARE

CATERING SERVICES

Country Weddings, Christenings and All Family Gatherings, Corporate Lunches, Seasonal Parties & Celebration Cakes

Sally Burr 01303 863642 07814 610995
sallycountryfare@gmail.com

FRESHLOOK GARDENS

Regular lawn mowing service. Garden design. Hard and soft landscaping. General garden work, fencing and decking. Turfing hedge cutting, small and medium tree work. Water features, ponds and patios.

For free quotation ring Geoffrey Hogben
01303 844 680 / 07866 091633

sales@freshlookgardens.info

www.freshlookgardens.info

Established since 1990. Fully insured.

Filehurst Associates

Tel: 01303 239990 E: info@filehurst.co.uk

Domestic & Business Removals - UK & France
Long or Short Term Storage
Business Document Storage
Call now for a no obligation quote

Browns

Elham 01303 840422
Hawkinge 01303 892000

Sales
& lettings

Over 40 years of Kent
village and country
property

THE local and regional
specialist. Why settle
for less?

www.brownscountryproperty.co.uk

rightmove

onTheMarket.com

RICS

LYMINGE NEWSAGENTS

11-13 STATION ROAD, LYMINGE CT18 8HS
01303862566

POST OFFICE, 'OFF LICENCE'
CONVENIENCE STORE

Dry Cleaning and Laundry, can deliver Papers
OPENING HOURS

7AM TO 10PM EVERY DAY

Local Tradesman

J Tappenden

Established 36 years

Painter/Decorator/Builder

01303 862467

077755 78008

Alan Croucher

Caravan Engineer

Have your Caravan, Motorhome, Horsebox or Trailer serviced without the fuss of taking it to a workshop.

www.arcmobilecaravanservices.com

Mobile: 07921 480919 Home: 01303 863194

*Non mechanical only on motorhomes and horseboxes

ARC

MOBILE CARAVAN
SERVICES

Jackson Plumbing Property Maintenance

Complete bathrooms and tiling
No job too small. Special rates for OAP's.

Telephone: home/evening 01303 270691
or daytime 07773 089398 or 07864 929826

M. J. Athow

BUILDER & DECORATOR, EST. 1965
GENERAL MAINTENANCE

Qualified and Insured. Free estimates

Telephone: 862616 Mobile: 07976 306665

Email: m.j.athow@live.co.uk

SIX MILE GARAGE LTD

Stone Street, Stelling Minnis, Canterbury, Kent CT4 6DN

- Car and light commercial servicing
- Class 4 and 7 mots and repairs
- Car and light commercial accident repair centre (insurance approved)
- Diagnostics bay with latest equipment
- Tyre bay with four wheel alignment and balancing
- Air conditioning servicing

Tel. 01227 709214 or 01227 709491, Fax 01227 709331

E-mail: office@sixmilegarage.co.uk

Trevor Law

Electrical Installations



Serving Elham Valley for 30 years
Part P Registered

01303 862348

07850 970087

J. V. Services

Servicing and Repairs:

- Garden Machinery
- Ride on Mowers
- Trailers & Horseboxes
- Quad Bikes
- Classic Cars

(Free collection and delivery)

Mobile Mechanic

Serve/Repair/Full Restoration:

- Compact Tractors
- Vintage Tractors
- Classic Tractors

Mobile: 078 0300 3047

john@jvserviceskent.com



**TMA
BUILDERS**

Specialising in Driveways, Brickwork, Patios, Fencing, Landscape Gardening. Tree work undertaken (lopping, felling and clearing).

General household repairs, painting, plastering, power jetting & cleaning.

No job too small!! All work guaranteed and insured.

For free advice and quotations please call: 07980114036/ 01303862361 (anytime)





DILTON MINI SKIP HIRE

Ballast, Hardcore, Sand
and Topsoil Supplied
REGISTERED WASTE CARRIER
01303 812448 or 07799 433754

'Helping you enjoy your garden'

CRT Gardening

Knowledge of general gardening, including lawn care, hedge trimming and cutting, vegetable garden work, fencing installations and repairs, small and medium size tree work and ongoing maintenance of all of them.

Heavy-duty work is also undertaken.

Free estimates; fully insured. Karl Dodd 07967442518

Email: karl.dodd@live.co.uk www.crtgardening.com

AIR LINK CARS

(You pack up, we pick up)

Airport, Seaport & Long Distance Travel Specialists.
The Family Run Business where service really counts
Estate cars and People Carriers



Fixed price 24hrs a day. No extras.
Written Confirmation of booking.
For the Easy Airport Link, Think AIR LINK!

01303 862704 - 07753 760897

KW CONSTRUCTION

Plastering & Rendering Specialist

Maintenance, renovations, extensions,
landscaping, patios, brickwork, roofing

- 30 years experience
- Competitive rates & free estimates
- Fully insured, prompt & reliable

07743488361/01303 862 653/info@kwconstruction.co.uk



Laing Bennett
INDEPENDENT ESTATE & LETTING AGENTS

PHILIP A CHAPMAN

With our excellent local knowledge, service
and two local offices we will get you moving

The Estate Office 8 Station Road Lyminge Kent CT18 8HP
T 01303 863393 E lyminge@laingbennett.co.uk
134 High Street Hythe Kent CT21 5LB
T 01303 264846 E hythe@laingbennett.co.uk

www.laingbennett.co.uk



Hawkinge

Veterinary Surgery You'll find us opposite

Veterinary Surgery

Lidl

supermarket, Hawkinge

Opening hours: Monday to Friday 08:00-19:00
Saturday 08:30-13:00 24 hour emergency service

Tel: 01303 764190

www.hawkingevetsurgery.co.uk

email: hawkingevetsurgery@gmail.com



Claire's Country Kitchen

Join us and enjoy some of our delicious home-baked items.
Breakfasts, Light Lunches, and Snacks with a selection of
Teas or Coffees.

Open Tuesday – Saturday, 8am - 3pm
Canterbury Road, Lyminge, Kent CT18 8HU

01303 864222

SCRUBBERS - Est. 1988

THE HOME AND COMMERCIAL CLEANERS

One off, regular or moving day 'Blitz'

Oven cleaning – Ironing

Carpet cleaning and more...

For a friendly and reliable service

Free Estimates

Tel: 01303487019 or 07834128671

Dennis Huntley

Installer of wood and multi-fuel stoves & fireplaces
Heating engineer, solid fuel servicing and chimney sweep

01303 862343

07850 784365



SEATHWAITE BOARDING CATTERY LTD.

Supporting Rhodes Minnis Cat Sanctuary

GREEN LANE, RHODES MINNIS, CT4 6XUTEL: 01303 862243 (Registered charity 262245)

ONLY CATS BOARDED, IN QUIET COUNTRY LOCATION

Individually heated chalets. Single cat £7 per day, a reduction for 2
or more cats. All cats boarded with us must have current vaccina-
tions against cat flu & feline enteritis. All profits from the boarding
cattery go to support homeless cats in the Sanctuary.

RHODES MINNIS CAT SANCTUARY

has a wide variety of cats available to caring homes.



CEDAR HOME MAINTENANCE

Building Alterations
Kitchen Installations
Painting & Decorating
Plumbing
Plastering

Damp Proofing
Drainage
Carpentry
Re-pointing
Patios

Windows & Doors
Gutters & Down Pipes
Fascia's & Soffits
Glazing
Electrical

Roofing
Fencing & Gates
Property Clearance
All Work carried out by Qualified Tradesmen (Fully insured - all areas of Kent covered)

Call Dominic: 07968197613 Office: 01303 230787

cedarhm@hotmail.co.uk and www.cedarhomemaintenance.co.uk

Environment Agency Registered (Reg/472477) Established Since 1986

HOLDEN PLASTERING

All aspects of Plastering

Smooth-over Artex - a speciality.

Coving, Tiling and Plumbing

Phone JAMES for free estimate or advice on:

01303 770449

07773 262970

Coul-Pups Pet Care Service. Fully insured, qualified and experienced member of National Association of
Registered Pet Sitters (NARPS). Dog walking, 1 to 1 dog training or in class environment in association with Elham Dog Train-
ing Club. Dog grooming, cat and small pet care and house/pet sitting.

Visit: <http://coul-pups.vpweb.co.uk/> Email: coulpups@gmail.com Phone: 01303 255176 or 07542 727326

Elham Dog Training Club Lyn Fagg 01303 862820