

THE LYMINGE NEWSLETTER

For the communities of LYMINGE, ETCHINGHILL, RHODES MINNIS and POSTLING

<http://www.lyminge.org.uk/>

October 2011

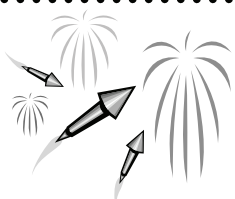
Produced by
THE LYMINGE ASSOCIATION

LYMINGE ASSOCIATION NEWS

Lyminge Calendar 2012 ~ Our calendar for the coming Jubilee year reflects the changes in Lyminge over the past 60 years and will be available from The Post Office, Lyminge Hardware Store and Lyminge Newsagents.

Christmas is coming... It is time to think about decorating the village for the festive season. We now have about twenty homes along Station Road and Canterbury Road who have a free tree bracket and free set of lights to go on the tree which is also provided at no cost to the householder. It certainly makes the village look attractive to folk driving through. If you live in either Canterbury or Station Roads and would like to join in and make the Christmas display even better please call Adrian on 862699.

The Diamond Jubilee of Queen Elizabeth II ~ The Lyminge Association is organising two events [also see page 12] including a Party on Tayne Field and the Audio-Visual presentation in the Village Hall. Do you have any special memories of village events and photographs that would help with this presentation? We are also looking for iconic objects from those decades. Do you still have one of those early Hoovers or other domestic appliance, tucked away in the attic, or a really old radio, or a Lambretta scooter!??? If you can help and have some ideas of your own, please contact Adrian on 862699.



LYMINGE

FIREWORK DISPLAY



Saturday 5th November

**JUBILEE FIELD
NEXT TO THE VILLAGE HALL
GATES OPEN 6.30pm**

Organised by the Lyminge Village Hall Management Committee.

Charity No 281845

LYMINGE PARISH CHURCH SERVICES & ACTIVITIES

Church e-mail: lyminge.church@bopenworld.com

Church Website: www.lymingechurch.co.uk

Sun 2nd Oct	8.00am	Holy Communion (CW order 2)
	11.00am	Joint Harvest Festival Service At the Methodist Church followed by lunch
Wed 5th Oct	7.00pm	Holy Communion (short 10-15mins said)
	7.30pm	Open House (Bible study & discussion)
	9.15pm	Time of Silence & Quiet Prayer until 10pm
Sun 9th Oct	10.30am	Holy Communion
Wed 12th Oct	7.00pm	Holy Communion (short 10-15mins said)
	7.30pm	Open House (Bible study & discussion)
	9.15pm	Time of Silence & Quiet Prayer until 10pm
Thurs 13th Oct	2.00pm	Time for Tots
Sun 16th Oct	10.30am	Family Communion with Sunday School
	6.00pm	Evensong
Wed 19th Oct	7.00pm	Holy Communion (short 10-15mins said)
	7.30pm	Open House (Bible study & discussion)
	9.15pm	Time of Silence & Quiet Prayer until 10pm
Sun 23rd Oct	8.00am	Holy Communion (CW order 2)
	10.30am	Holy Communion
Wed 26th Oct	7.00pm	Holy Communion (short 10-15mins said)
	7.30pm	Open House (Bible study & discussion)
	9.15pm	Time of Silence & Quiet Prayer until 10pm
Sun 30th Oct	10.30am	Matins followed by Holy Communion

Afternoon Tea - Nailbourne Court – Sunday 2nd October

This is held in the lounge from 3 - 5pm.

If you would like to come but need a lift, contact Sue on 862221

Wentworth Craft Group – Wentworth Close - Tuesday 4th October

2pm – 4pm in the lounge. Even if you are not a 'crafty' person, you are still very welcome to come along for a cup of tea and a chat

For more information contact Lynne on 863010

Coffee morning – Wentworth Close - Tuesday 11th October

This is held in the lounge from 10.00-11.30am. Do join us as we meet with the residents of Wentworth Close for coffee and a chat

Mothers Union

For more details about the dates below please contact Sue on 862221

Wednesday 12th October

10.30am in Nailbourne Court Lounge

Jenny Colvin will talk about her life as a missionary in Pakistan

Thursday 27th October- 12 midday

Prayer time in St Gabriel's Chapel at Canterbury Cathedral

Time for Tots – Thursday 13th Oct

This is a short pre-school friendly service for babies and toddlers with toys and action songs. Also a chance for their carers to get together and chat. Refreshments provided

For more information contact Vanessa on 862432 or Trish on 862151

Prayer Shawl Ministry Group – Wednesday 19th October

This group meets in Nailbourne Court Lounge from 2.30 -4.30pm to knit prayer shawls and pray for the people they are for. This is a joyous and useful way to bring prayer and healing to our world and everyone is welcome to join in whether you can knit or not. Tea & coffee are provided. For more information contact Madelaine Lewis on 863582

Bereavement Support Lunch – Thursday 20th October

Coach and Horses Pub - 12.00 for 12.30pm

All are welcome and transport can be arranged,

Please contact Vanessa on 862432

St Nicholas Fayre Craft Group – Tuesday 25th October

This group meets at 68 Silverlands Road every month to organise and create articles for the St Nicholas Fayre Craft Stall.

Anyone is welcome especially if they have some new ideas for us

Contact Lynne on 863010

LYMINGE METHODIST CHURCH

Visitors are very welcome to join us at our weekly service at **11am** and invited to share fellowship afterwards with a cup of coffee/tea.

Preachers for October:

2nd Oct. - United Anglican/Methodist Harvest Festival at the Methodist Church

9th Oct. - Rev. Robin Blount

16th Oct. - Mr. David Foreman

23rd Oct. - Rev. Sam Funnell (incl. Holy Communion)

30th Oct. - Mr. Graham Whistance

Reflections – Alternative, reflective worship 7.30-8.30pm Wednesday, 26th October.

Monday Fellowship 2.30-3.30pm weekly in the Parlour. Feeling lonely? Come and share in a friendly meeting with speakers, games, music, fun, laughter and refreshments.

For Baptisms, Weddings or Funerals, please contact the Minister, Rev Kevin Taylor on **01303 266281**

Rhodes Minnis Church

This small Chapel in beautiful countryside surroundings holds a weekly Sunday Service normally at 9.30am. Followed by coffee and biscuits. A warm welcome is extended to any visitors

Oct. 2 - 3pm Harvest Festival - Rev. Kevin Taylor. Please note **NO** morning service

Oct. 9 - Mr. Dudley Shipton (includes Holy Communion)

Oct.16 - Mr. Richard Blackwell

Oct.23 - Mr. Jim Wilson

Oct.30 - **NO service at Rhodes Minnis** but Valley service at Lyminge Methodist at 11am

POSTLING CHURCH SERVICES

Saturday 1st October Harvest Thanksgiving Supper in the Village Hall at 7pm

Sunday 2nd October Evensong 6.30pm

Sunday 9th October Family Communion 9.30am

Sunday 16th October Holy Communion 8am

Sunday 23rd October Family Service 9.30am

L.E.T. (Lyminge Ecumenical Team) Prayer Box.

Please place any prayer requests concerning a bereavement or illness in the prayer box at Lyminge Post Office. It would help to have the name of the person you are praying for but not necessarily your name. These will be included in Sunday worship in all churches and added to private prayer life.

Terms and Conditions. Copy deadline is 18th September

Email your copy in word.doc format to the editor – see below. Your payment must be received before your article or advert can appear in the Newsletter. Please leave your payment in a sealed envelope at the Lyminge Hardware Store or at the Lyminge Library. Your name, organisation and telephone number must be included on the envelope and with your advertisement or copy.

Business adverts cost £9.00 per month or £90.00 per year. Charity adverts and articles from - £1.50 per month, or £15.00 per year depending on size. The annual rate offers 12 entries for the price of 10. Please make cheques payable to 'The Lyminge Association'

If you do not have email, a typed paper-copy can be left with your payment. For further details call the editor - see the number below. If you require a receipt you must include a request for one and a s.a.e. and with your payment.



This page is printed to give readers and organisers the opportunity of planning their events without clashing with existing events which are already 'in the diary'. It is not intended as the sole means of advertising and we do not take responsibility for errors or omissions. Acceptance is at the discretion of the editor. Please send your updates either by email to page3lym@google.com or via the other methods outlined on Page 2. Location and name codes are as follows:

C&H: Coach & Horses; **ECC:** Etchinghill Cricket Club; **EVH:** Etchinghill Village Hall; **ERA:** Etchinghill Residents' Association; **ES:** Elham Square; **KH:** Korf House; **LL:** Library; **LMC:** Lyminge Methodist Church; **LMP:** Lyminge Methodist Parlour **LPC:** Lyminge Parish Church; **LPO:** Lyminge Post Office; **LSH:** Lyminge School Hall; **LVH:** Lyminge Village Hall; **LW:** Lord Whisky; **NP:** Nailbourne Parlour; **NVH:** Newington Village Hall; **PC:** Postling Church; **PH:** Lord Whisky, Park Hse. **RVH:** Rhodes Minnis Village Hall; **RMC:** Rhodes Minnis Church; **SNL:** See NewsLetter for details; **TC:** Tayne Centre.

ONE OFF or IRREGULAR EVENTS					ONE OFF or IRREGULAR EVENTS				
Date	Time	Event	Where	Tel. No.	Date	Time	Event	Where	Tel. No.
1 Oct	6:00am	Boot Sale	ECC		29 Oct	7:00pm	Help for Heroes Concert	PC	862142
2 Oct	9:30am	Garage Safari	Parish	863197	5 Nov	6:30pm	Fireworks	LVH	862928
6 Oct	10:00am	MacMillan Coffee	LL	862180	8 Nov	7:15pm	TC Talk	TC	862073
11 Oct	7:30pm	TC Talk	TC	862073	12 Nov		LW Autumn Bazaar	LVH	
15 Oct	7:00pm	Quiz	LVH	862928	21 Nov	7:00pm	ERA Cinema Club	EVH	862873
17 Oct	7:00pm	ERA Cinema Club	EVH	862873	22 Nov	7:30pm	Christmas Gifts Sale	C&H	862694
17 Oct	7:30pm	L Youth Action	LMP	863283	23-26 Nov		Dram. Soc. Play	LVH	
18 Oct	7:00pm	Gardeners' Soc.	TC	863049	3 Dec		St. Nicholas Fayre	LVH	
22 Oct	4:00pm	LHS 40 th Anniv. "Raising a Riot"	TC	862015	7 Dec	7:15pm	TC Words & Music Concert	LVH	862928
22 Oct	8:00am	LW Boot Sale	PH		10 Dec	7:30pm	Christmas Concert	TC	863049
26 Oct	7:30pm	RVH AGM	RVH	869096	25 Dec	12:00pm	Christmas Lunch	LVH	863256
29 Oct	1:00pm	LHS 40 th Social	LVH	862972	25 Dec	12:00pm	Christmas Lunch	C&H	862694

WEEKLY EVENTS					WEEKLY EVENTS				
Day	Time	Event	Where	Tel. No.	Day	Time	Event	Where	Tel. No.
Mon	10:00am	Open House	EVH	863394	Wed	7:30pm	Cantores Domincae Choir	LSH	01233 503686
Mon	10.30am	Lyminge Larks (Singing)	TC	01233 750223	Wed	7:30pm	Circuit Training	LVH	07951 698 008
Mon	2:30pm	Monday Fellowship	LMP	862164	Wed	8:00pm	Scottish Dancing	EVH	
Mon	7:30pm	Circuit Training	LVH	07951 698 008	Thu	10:00am	RM Toddler Group	RVH	863096
Tues ¹	10.00am	Baby and Toddler Group	TC	863274	Thu	10:00am	Art Group – Morning	TC	211364
Wed	10:15am	Gentle Exercise Class	TC	862465	Thu	2:00pm	Art Group – Afternoon	TC	862972
Wed ¹	5:00pm	Digital Quandary Group	LSH	862972	Fri	9:10am	Circuit Training	TC	07951 698 008
Wed	7:00pm	French Conversation Grp.	KH	862972					

MONTHLY EVENTS					MONTHLY EVENTS				
When	Time	Event	Where	Tel. No.	Day	Time	Event	Where	Tel. No.
1 st Mon	10:15am	Health Walk	LVH/ES	862959	1 st Fri	6-9:pm	Mexican Night	C&H	862694
Last Mon		Parish Council Meeting	SNL		3 rd Fri	6-9:00pm	Curry Night	C&H	862694
1 st Tue ²	7:45	LHS Talk/Event	TC	862972	4 th Fri	7:30pm	Beetle Drive	RVH	862616
3 rd Tue	2:30pm	Etchinghill W.I.	EVH	863503	1 st Sat	10:00am	Farmers' Market	EVH	862832
1 st Wed	10:30am	Lyminge Friends	LMP	862427	2 nd Sat	10:00am	Postling Ch. Coffee Morn.	PC	863536
2 nd Wed	10:30am	Mothers' Union	NP	862221	3 rd Sat	8:00am	Coins For Clutter	TC	862164
3 rd Wed	7:30pm	RM Evening Circle	RVH	862913	Last Sat	11:00am	Lyminge Poetry Group	LL	863474
Last Wed	7:30pm	Quiz Night	C&H	862694					

¹ In Term Time only

² Except Jan. & Feb.



Lyminge Pre-School

**Passionate about providing excellent
childcare**

**We're proud of our latest Ofsted report which
stated that our 'Partnership with parents and carers
is outstanding' in every area!**

We are a well-established pre-school, with
committed, enthusiastic and highly qualified staff
We offer:

- Range of flexible sessions
- Breakfast club
- Outdoor play area with sensory garden
- Spacious indoor facilities

Did you know...?

**K.C.C. will fund up to 15 flexible hours per week for
children 3+ years. Also we are a provider for the
governments initiative 'free for 2' to provide free
hours for 2 year olds.**

To discuss your requirements, or to arrange a visit, and meet the
team, call 01303 863149 (day) or 07709420736 (eve)

Alternatively, email admin@lymingepreschool.org.uk and
visit our website www.lymingepreschool.org.uk

Autumn Quiz

15 October 2011

In Lyminge Village Hall

Bar

2 Course Hot Supper

Tables of 4 – 8 persons

£8.00 per person

7.00pm for 7.30pm start

To book your table call:

Hurry – some tables already sold!!

Honor 862928 or Niki 862530

Organised by the Village Hall Management
Committee Reg Charity 281845

In Aid of the Lord Whisky Sanctuary Fund

Registered Charity: 2843483

End of Year Boot & Autumn Clearance Sale Saturday 22nd October

From 8am

at Park House Animal Sanctuary

Stelling Minnis, nr Canterbury CT4 6AN

Refreshments – Admission by donation

Plenty of free parking

All Boots just £5

Forthcoming Events:

Saturday 12th November - Autumn Bazaar at Lyminge
Village Hall

Saturday 26th November Christmas Bazaar at The John
Baker Memorial Hall, Lower Hardres

Sat 3 Dec – Christmas celebration and blessing of animals

You can now donate via a simple text message.
Send a text to 70070 including our charity's code
and the amount you wish to donate (minimum
£1, maximum £10).

For example LWSF46 £10

We will receive every single penny
of your donation and texts are free
on every network. You will also
receive a text with a link to a Gift
Aid form, so if you are a UK tax
payer, we will benefit from a 25%
boost to your donation.

JustTextGiving™
by **vodafone**

**Our Charity
Code:
LWSF46**

FARMERS and CRAFT MARKET

ETCHINGHILL VILLAGE HALL

St Mary's Drive, Meriden Park CT18 8 NQ

Saturday 1 October

10.00am – 12.30pm

First Saturday in the Month

Contact Number for bookings

Bryan – 01303 862832

**We now have an excellent Greengrocer and
Pork Butcher**



**Pilgrims
Hospices**

IN EAST KENT

Wednesday 5th October 2011 Back to our usual
Coffee Morning including some fashions. Why not
get something new for the Winter Season. All our
usual stalls, bric a brac, books and cakes, and
raffle. 9.30am onwards.

Wednesday 2nd November CHRISTMAS FAYRE
and coffee morning. Usual Christmas stalls. Get
your cards and calendars. Many Christmas goodies
and our great selection of cakes.
9.30am onwards

All at: The Holy Trinity Church Hall, Sandgate Road,
Folkestone

Lyminge Village Hall

100 CLUB RESULTS

The first winner of the
New Village Hall 100 Club
was drawn at the Coach & Horses
on 31 August 2011

The first winner was
Val Darney

If you would like to join our new club then
please contact
Niki – 862530 or Sue- 862696

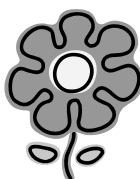
Village Hall Management Committee Reg Charity 281845

Lyminge Gardeners Society

Tuesday 18th October

AGM

Lyminge Methodist
Church Hall
7.30pm



For further details, please contact Peter Taylor
Tel: 863225

Seasoned Mixed Logs

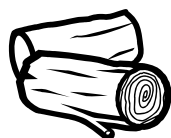
For Sale

£70 for large truck load

Free delivery

Tel: 01227709562

Mob: 07772698899



LYMINGE LIBRARY

MACMILLAN WORLD'S BIGGEST COFFEE MORNING

Thursday 6th October
10.00am - 11.30am

Homemade cakes and any help would be
much appreciate

Jane - Lyminge library
01303 862180

**WE ARE
MACMILLAN.
CANCER SUPPORT**

Slimming World



*the club
with the
big heart!*

**SAVE
up to
£5**

**FREE
online
support**

NEW GROUP OPENING
ON 27th OCTOBER
Thursday 7.30pm
LYMINGE Bowls Club
Woodland Road

Tel: Kirsty 07980 940368

0844 897 8000
www.slimmingworld.com

Slimming
WORLD
because you're amazing



ELHAM VALLEY MONDAY HEALTHWALKS

The weekly Healthwalks from
Lyminge and Elham will be
suspended over the winter months,
November to March (incl).

During these months there will be an organised
MONTHLY walk along the Elham Valley Way on the
first Monday of the month.

The first of these on Monday 7th November will
depart from Lyminge Village Hall at 10.30am,
destination Elham. Walkers can do either the return
trip with a coffee stop in Elham, or one-way only
and catch the bus back.

The departure points will alternate as before, with
the December walk starting at Elham Square.

The weekly walks will re-commence on Monday 2nd
April 2012. Any queries please contact Val 862959,
or Betty 840547

YOGA & RELAXATION CLASSES

Local friendly classes suitable for all ages & abilities

Mon 1.30pm Elham Village Hall

Mon 7.00pm Rhodes Minnis Village Hall

Thur 10.00am Etchinghill Village Hall

Thur 7.00pm Elham Village Hall

Tel: **Christine Yorke 01303 863196**

Email: yorkes@yoga4freedom.co.uk

ETCHINGHILL W.I.

Barbara Syrett welcomed members to the September meeting after the summer break.

Birthday posies were presented to Peggy Banks, Sylvia Clark, Sheila Green, Pat Kent, Marilyn Norton, Doreen Brown, Mavis Hodson, Janet Hooles, Kate Towse and Joan White. The sales table selling jams and pickles proved very popular.

Helen Allinson took us back to our childhood speaking about a hundred years of toys and play which was most enjoyable. The hostesses, Dottie Cross, Chris Marshall and Jill Le Cras then served a delicious tea.

Our 89th birthday meeting will be held on **Tuesday, 18th October at 2.30pm** when Mr. Bernard Lockett will speak about "**Experiences of Growing Up in Post War London**". There will also be a craft and homemade cake stall.

For further information please contact Barbara Syrett on 01303 265229 or Rita Warner on 01303 863503



COINS FOR CLUTTER

TABLE BOOT FAIR
SATURDAY 15 October

RAISING FUNDS FOR
TAYNE CENTRE RENOVATION GROUP
LYMINGE METHODIST CHURCH

**TO BOOK A TABLE PHONE FLORRIE
ON 01303 862164**

TABLES COST £5 FOR 1 OR £8 FOR 2
TIME 7.30AM FOR STALL HOLDERS

8AM TO 12.00 NOON FOR CUSTOMERS

**LOCAL FRESH PRODUCE, HOME MADE CAKES AND
PRESERVES, BRIC-A-BRAC and CRAFTS**

Any orders for Christmas, for example fruit and veg,
cakes and sundries, meat from our pork butcher, etc
may be placed Oct / Nov for Dec 17th pick up

**BACON ROLLS TEA AND COFFEE
COOKED TO ORDER**

LYMINGE HISTORICAL SOCIETY

TUESDAY 1st November

7.45pm

at Lyminge Methodist Church Hall

AGM and 'My Family and other Oddities'

A talk by Derek Boughton

Non-members welcome.

Hall Redevelopment Fundraiser



Lyminge Through The Lens

a talk on village shopping over the last
100 years

by Derek Boughton

Talk at 7.30pm

Tuesday 11th October

price £3 ~ free tea/coffee at 7.15
(event sponsored by two kind donors)

Computer Classes

Complete beginners and novices

New classes starting at
Everist Court, Lyminge

**Open Day - 7th October 2011
9.30am - 1pm**

**Classes run 1st & 3rd Friday
every month starting in October**



Call 01227 811785
for more information
enquiries@traininghighway.org.uk
www.traininghighway.org.uk

SEATHWAITE BOARDING CATTERY LTD.



Supporting Rhodes Minnis Cat Sanctuary
GREEN LANE, RHODES MINNIS, CT4 6XU
TEL: 01303 862243 (Registered charity 262245)



ONLY CATS BOARDED, IN QUIET COUNTRY LOCATION

Individually heated chalets. Single cats £5.50 per day, a
reduction for 2 or more cats. All cats boarded with us must
have current vaccinations against cat flu & feline enteritis.
All profits from the boarding cattery go to support homeless
cats in the Sanctuary.

RHODES MINNIS CAT SANCTUARY

has a wide variety of cats available to caring homes.

Lyminge Dramatic Society

"The Flint Street Nativity", our next production, is well on the way to being a very successful show and one which we know you will thoroughly enjoy – don't forget to make a note of the dates, 23rd – 26th November.

We are busy collecting props for the show and we would like your help please – is there anyone out there with a Spanish, straw donkey that they brought back from their travels? If so, please will you lend it to us? (Contact Sue on 862837 or Mike on 862743). We promise to take very good care of it – we'll even call it by the name you gave it and return it well fed and happy!

The characters in the show are taking shape very nicely. We have a "Virgin Mary" who spends most of her time organising the other children and you can just imagine her in later life as the bossy Chairperson of every village society she belongs to. Our "Narrator" is getting ever more upset at the thought of his father not seeing him in the nativity play and the "Angel Gabriel" is plotting constantly to displace the child playing Mary and being nasty to her best friends – "Gabriel" really is a little madam!

Tickets go on sale at Laing Bennett Estate Agents on Saturday 29th October, price £7 and £5 concessions. Make sure you get there early to get the best seats and don't forget that Mary-Claire's Country Kitchen in Lyminge is once again doing pre-theatre suppers as discounted prices.

Look forward to seeing you at the play.



Lyminge Youth Action AGM

Our committee members invite you to join us for our
Annual General Meeting at the
Lyminge Methodist Parlour
at 7.30pm on Monday 17th October 2011.

Come along and hear about Jubilee Field developments and other activities during the past twelve months!

We would love to hear from anyone interested in joining our group. New ideas and inspiration for activities etc at the Jubilee Field site would be very welcome, particularly for the young people of the community.

**Please call Pam on 863283 or Helen on 863621 if you are interested in joining our group
Or just come along on the AGM evening to find out more.**

Rhodes Minnis Evening Circle

Our speaker on the 21st September was Kieran Renihan. He told us about "Chocolution" - how chocolate came from Mexico in 1500BC and was gradually introduced into Europe. Kieran obtains chocolate in the form of cacao beans from Ecuador. We were given samples of dark chocolate which is full of vitamins and minerals, and is an anti-oxidant - naughty but nice!

Our next meeting is on the 19th October when we look forward to Margot Bonny giving us a talk on The History of Illuminating Children's Books. We meet at Rhodes Minnis Village Hall at 7.30pm, and everyone is welcome. Marion Hoare 862913



We continue to provide a wide range of services to local older people (over 50) from our Jubilee Centre in Lyminge. Services include: free information and advice, hairdressing and chiropody at very reasonable rates, free internet access, computer training, a volunteer-manned cafe serving morning coffee and snacks, 2 course lunches for £3.90, laundry service and a hot meal home delivery service. We also offer social activities including art classes, cookery sessions, outings, seated exercise sessions, quizzes, dancing and a monthly song club.

We are able to offer transport for those who wish to spend the day with us or you are very welcome to pop in and access the service or activity that appeals to you.

CAN YOU HELP? To continue and expand our services to those who need us, we would like to appeal for volunteers to drive our small 9 seater minibus and collect older people from Lyminge and the surrounding villages on Tuesdays and Wednesdays 0900-1100 and 1430-1600hrs. A member of staff would accompany you as escort and a full induction package is offered. If you could help with any of these times or would like any further information about our centre please contact :

Matthew Martin on 01303 269602.

THE ROYAL BRITISH
LEGION



As the autumn approaches, so does this year's Poppy Appeal. Last year we did exceptionally well in the Elham Valley with a total of over £7000 and I am hoping that this year will be equally

as good. We shall be starting the house-to-house collections in the area from Saturday 29th October and I urge everyone to please support us as much as possible to make it our most successful year yet.

The Royal British Legion spends more than £200,000 per day delivering its vital welfare work to service people and their families and therefore I thank you in advance for your consistent support.

Susan Foster
Poppy Appeal Organiser, Elham Valley

Rhodes Minnis Village Hall AGM

Wednesday 26th October at 7.30pm

If you live in or around Rhodes Minnis, please come and support your hall.

You will be very welcome
Just come along and join in

Contact: 01303 863096

Hoopla Fitness and Fun

Fridays 4.30-5.30pm
Lyminge Methodist Church Hall
starting 7th October

All ages and abilities welcome
Come along and give it ago, hoops provided.
Phone: 07811 420822
Email: fitandflexible@yahoo.co.uk

Gentle Pilates

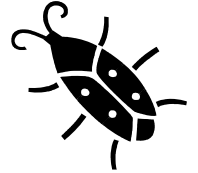


Fridays 11am-12pm
Lyminge Bowls Club

All ages and abilities welcome
Spaces are limited
Please phone 07811 420822 or
Email: fitandflexible@yahoo.co.uk

Rhodes Minnis Village Hall Beetle Drive Friday 28th October 7.30pm

Come and spend a family evening
Have some old fashioned FUN
New players welcome
Adults £2, children 50p
Includes refreshments
Raffle



LYMINGE FRIENDS

**Meetings are 10.30 - 12.30 in the
Methodist Church Parlour**
Everyone welcome.

Wednesday 5th October - A talk on a Family History journey back in time - Rosemary Piddock
Friday 14th October - Curry Night at Gurkha Palace
Wed 2nd November - A talk on the Coast Guards - Derek Smith followed by Annual Bring & Share Lunch
Wednesday 16th November - Shopping trip to De Bradlei Wharf
Wednesday 7th December - Christmas Social, Secret Santa and Mince Pies
Saturday 31st December - New Year's Eve Lunch

No membership fees - only £1.50 per month. For more details contact Marian on 862015

For Sale

Two, two-seater settees in good condition. Will sell separately or together. Any reasonable offer considered. Buyer collects
Tel: 01303862051



BASS PLAYER
NEEDED FOR A FUN/SWING ALONG BAND
WE PRACTICE LOCALLY ON TUESDAY EVENINGS.
PLEASE CALL Roger Goody
01303 862979

Lyminge CE Primary School School Caretaker

Part time 27 hrs per week 44 weeks a year

(commencing November 28th 2011)

Kent Scheme 3 (points 7-11 starting at £14,100 pro rata)

Due to retirement, we are looking for a caretaker at our vibrant village school. A dedicated and reliable person with a flexible approach to work is required for this post; duties involve manual work including working at heights and manual handling, security and cleaning. Endless patience, approachability and a sense of humour are required.

The post is subject to an enhanced CRB disclosure, health check and references. Lyminge CE Primary is an Equal Opportunities employer and is committed to safeguarding and promoting the welfare of children.

Closing date Monday 17th October for
interview on Thursday 20th October.

Visits to the school are warmly welcomed.
For enquiries and an application pack please
contact the school office.

Tel 01303 862367

or E mail headteacher@lyminge.kent.sch.uk

Etchinghill Update October 2011

Farmers 'and Craft Market

Farmers' Markets are held on the first Saturday morning of every month. The next market will be on October 1st from 10 to 12.30 in Etchinghill Village Hall.

Open House

Every Monday morning in the Village Hall, 10-12.00.

24th October-Richard King will talk on his journey around the world in a Double Decker Bus. This talk will cost £80 so we will have to make a small charge to try to get as big a crowd as possible.

Etchinghill Residents' Association

1. ERA Cinema Night - Monday 17th

October at Etchinghill Village Hall. We will be screening the recently released Black Swan. Membership price of £5.00 per head (includes drink and ice cream or popcorn). For £7.00 you can also see the remake of TRUE GRIT on Monday 21st November. All screenings start at 7.00 pm. For further information contact Barbara on 01303 862873.

2. Can you sing or play an instrument (not electric), then we need you? The ERA is looking for someone to lead the singing at the **Christmas Tree Lighting Up Ceremony, where we would like to sing some traditional Christmas carols. If you can help please contact Wendy on 01303 863495.**

LYMINGE BABY AND TODDLER GROUP

Calling all parents, grandparents or carers with children under school age at a loose end on Tuesday mornings. We meet every week [during term time] at the *Methodist Hall* [now known as the *Tayne Centre*] in Lyminge between 10.00am -12 noon to give the children a chance to play and interact with others the same age.

We offer a wide range of craft and play activities, including trikes, bikes and slides to painting books and jigsaws.

We charge £1.50 per session (1st session free) which includes 'half time' refreshments for both adults and children.

Come and join in the fun. For further information 'phone
Karen 01303 863274

RHODES MINNIS TODDLER GROUP

We are a small group open to mums, dads, grandparents and carers who meet on Thursday mornings at Rhodes Minnis Village Hall any time between 10 am – 12 noon during term time.

Come and have a tea/coffee while having a friendly chat as your child plays. £1.50 per session (first session free)

Back from Thursday 8th September

'Phone Elaine on 01303 863096 if you need more information

TAYNE CENTRE Hall HIRE



Previously known as the
Lyminge Methodist Church Hall

1 June to 30 September £5.50 per hour
£19.00 per 4 hour session £35.50 full day

1 October to 31 May £8.00 per hour
£26.50 per 4 hour session £46.50 full day
(including heating)

Parlour

All Year £5.00 per hour, with use of electric -
over heaters, if required.

Overnight Stays

1 June to 30 September £33
1 October to 31 May £44

For any enquiries please call **07971 722 401**

ETCHINGHILL VILLAGE HALL HIRE FEES

Occasional Users

Standard weekday rates (08h30 to 23h00)

Hourly rate – up to 4 hours £7.00

1 Session – 4 continuous hours £21.00

2 Sessions – 8 continuous hours £42.00

All-day rate £70.00

Weekend rates (08h30 – 22h00 Sundays) will be
£10.00, £30.00, £60.00 and £100.00 respectively

Discounted rates are available for **Etchinghill Residents** who are occasional hirers and for **Regular Users** after 12 months' hiring.

The Committee Room costs £6.00 per session for **Regular Hirers**, £6.00 per hour for **Non-Residents** and £5.00 per hour for **Residents**.

All-day hire for **Weddings, Banquets and Commercial Functions:**

£100.00 for Residents

£200.00 for non-Residents.

For bookings and enquiries, please contact **Eileen** on
01303 862832.



Trafalgar Day 29th October 2011

Come & Sing for Help for Heroes

A concert that Salutes the Common Soldier from
the Napoleonic War 1796 to the present day
2011 and to include
Songs/Readings/Poems/Memoirs from local
people.

Postling Church 7.00 - 9.30pm

All monies raised donated to
Help for Heroes Charity.

Entry by ticket £7.50 to include concert/glass of
wine/nibbles & entry to draw for an escorted day
visit for two to the WW1 battlefields

Tickets: Jane Seymour 862142,
Pat Elphick 863536 & Laing & Bennett (1st Oct)

RHODES MINNIS VILLAGE HALL

Are you looking for a hall in which to hold
Practice sessions, private party/function or
Meeting?

Rhodes Minnis Village Hall has the capacity
to take parties of up to 100 and has kitchen
facilities at no extra cost.

Rates:

Sun – Fri £14.00 per session. £34.00 per day

Sat - £20.00 per session. £27.00 evening session
£55.00 per full day.

Session Times:

AM session 8.30am – 12.30pm

PM session 1.30pm – 5.30pm

Evening Session 6.00pm – 11.45pm

A £25.00 returnable deposit is payable in advance.
Electricity will be charged at 18p per unit. Regular
users will be given a special reduced rate.

**For details contact Mick or Dorothy Athow on
01303 862616**

Lyminge Village Hall

Lyminge Village Hall, a Hallmark accredited hall
offers an excellent venue for up to 200 people and
can meet a variety of requirements with its small
Committee Room, larger Club Room and the Main
Hall with bar and servery and of course a large stage.
We continue to improve the facilities with upgraded
toilets and storage. The Management Committee
hold regular fundraising events which are advertised
elsewhere in the Newsletter. With the full stage now
available, concerts and band bookings can be
accepted. With excellent parking, kitchen facilities
and plenty of tables and chairs our Village Hall
makes a great place for larger celebrations or charity
events.

Price example: Friday or Saturday evening £55.00

For full price details and availability just give

Jacqui Storey a call on 862044

Sibton Park Cricket Pavilion Club

Having a party? Need a local venue?
Why not take advantage of Sibton Park Cricket
Club's lovely pavilion?

We have a bar with club price drinks & friendly
efficient staff.

There is capacity for up to 100 guests. For further
information or to make a booking please

Contact Lesley Kirk, Tel: 01303 862366



Lyminge



Handbells



With planning for the festive season now on our minds it is timely to mention how great handbells sound when playing carols and Christmas tunes. We shall be playing as usual at St Nicholas Fayre and for the Crib Service and Midnight Mass in the Parish Church. But if you would like us to come along to your own private celebration we are more than happy to oblige. All we need is a large table, room for up to 12 players and a donation of at least £40 for our new charity, the Nepali Children's Trust. A contribution to travelling costs is asked for if bookings are at locations more than 5 miles from Lyminge. Weekends and evenings only please and naturally we need plenty of advance notice as we do get booked up. Want more info or make a booking?

Just call Ro Edmond on 863201 or email welldorm@aol.com

Lyminge Heritage Questions and Answers

Recently, I asked if anyone remembered any pub sports/games that were played locally (Q26). This prompted Joan Tugwell to contact me. She told me about the pub sports/games that were played at the Coach & Horses. She recalled Shove Ha'penny being played there. This game was a little different to the game that is often seen today. Rather than trying to shove the half penny into an area marked out on the board, it had to be shoved between various pins that had been nailed into the board (in a similar fashion to how pins are nailed in bagatelle). Joan also remembered Fox & Geese being played on a draughts/chess board. As I understand it, in this game, one black piece is played against eight white pieces and all pieces move in the same way as in draughts. The aim is for the black piece, the fox, to get from one side to the other without being captured whilst the white pieces, the geese, try to capture the fox.

Joan also recalled skittles being played at the Coach & Horses and pointed out that the skittle alley was laid out on the foundations of the pub annexe which was used for providing dinners when the Fat Stock Show was held at the market. The annexe was also used for flower and vegetable shows and children's parties. Whilst Joan & I talked, she also recalled the landlords of the Coach & Horses. During the 1930s Joe Clayson and his wife, Vi, were in charge. Before that, in the 1920s, Vi's father Charlie Hopton was the landlord. Joan also recalled that at one time an old calendar was found hidden away in the pub which showed that in the 1890's the landlord was Charlie Bushell who was Joan's ancestor. Does anybody else have recollections about the local public houses?

Duncan Harrington is investigating the history of 'Beating the Bounds' in Lyminge, in preparation for an article in the next volume of *'Lyminge, A History'*. This was a longstanding tradition held at Rogation, the week before Ascension, which involved walking around the perimeter of the parish, so that everyone knew the boundaries of the parish. It was last held in 1964 and, before that, prior to the Second World War. Does anybody remember or have any mementos, pictures etc. of any of these events? If you do please let Duncan know on 01303 862368.

Talking of parish boundaries, it is quite amazing how little Lyminge's parish boundary has changed. Recently, I have looked at old Ordnance Survey maps and the 1837 Tithe Map. I have found that the boundary has remained relatively unchanged. The only change I have discovered is that, within the last twenty years, the parish has lost the Eastleigh Court and Wheelbarrow Town area to Stelling Minnis parish.

That's all for this month. If you have any answers or want to ask any questions about the local heritage then please get in touch with me.

Alistair Bailey (email: abailey447@aol.com tel: 864235)

LYMINGE WEATHER STATISTICS - August 2011

Thanks to Mr. D. Godden for these weather statistics and notes.

	Temperature (°C)	Air Pressure (hPa)	Wind Speed (mph)	Total Monthly Rainfall
Maximum	28.1 (2 Aug)	1015 (9 & 10 Aug)	18 (7 & 14 Aug) N	100.5 mm (3.95 in)
Minimum	7.0 (9 & 11 Aug)	1003 (6-8 Aug)	Highest Daily Rainfall	20.5 mm (0.81 in) 4 Aug

Notable features for the month were the wind which was moderate, within a range of just 9mph, the air pressure which was within a range of 1003-1015 and the rain over the month being the wettest August for 10 years.

QUEEN ELIZABETH II DIAMOND JUBILEE 2012 – DRAFT LYMINGE PARISH SCHEDULE

Below is the current draft schedule of proposed events. There may be changes to this schedule as individual events progress – including more very local events on a street by street basis. Please provide comments, particularly plans for any additional events, to the Parish Council Clerk for inclusion in this draft schedule.

Contact lymingepc@btconnect.com

SATURDAY 2 JUNE 2012

WHEN	WHAT	WHERE	ORGANISATION	FURTHER INFO FROM
Morning	Audio visual presentation (similar to that in Millennium year)	Lyminge Village Hall	Lyminge Association	Adrian Willcox
+afternoon eve	Beer and BBQ event with live music	Coach and Horses	Coach and Horses	Alys

SUNDAY 3 JUNE 2012

WHEN	WHAT	WHERE	ORGANISATION	FURTHER INFO FROM
10.30am	Civic Church Service	St Mary's and St Ethelburga's Church	Lyminge PCC	Mike Chinneck
1pm	Parish Party including Pram/Wheelbarrow race, live band, Big screen to follow Thames Jubilee Pageant, etc	Tayne Field	Lyminge Association	Adrian Willcox

MONDAY 4 JUNE 2012

WHEN	WHAT	WHERE	ORGANISATION	FURTHER INFO FROM
11am	Inter village Wheelbarrow/Pushcart Race	Lyminge to Etchinghill Village Hall		
12.30	Parish Big Lunch	Etchinghill Village Hall	Etchinghill Residents' Assn	
2pm	Petanque Match	Etchinghill Village Hall	Etchinghill Village Hall	Graham Barber
Eve	Unspecified event and fireworks including Big Screen to follow lighting of Jubilee Beacons	Lyminge Village Hall	Lyminge Village Hall	
9pm (ish)	Jubilee Beacon	St Mary's and St Ethelburga's Church Tower	Lyminge PCC	

TUESDAY 5 JUNE 2012

WHEN	WHAT	WHERE	ORGANISATION	FURTHER INFO FROM
afternoon	Parish Sports Day	Jubilee Field using Lyminge Village Hall facilities		
eve	Fund raising event (Haywardians?)	Tayne Centre	Tayne Centre Renovation Group	

Please note: **THURSDAY 7, FRIDAY 8 and SATURDAY 9 JUNE 2012**

It is probable that Lyminge Dramatic Society will put on a Jubilee themed Variety Show in Lyminge Village Hall in the evenings.

Out and About

Do you have any photos of local events or local groups in action, please call 01303 862699



◀ The sun shone on the **Lyminge Friends** as they enjoyed another successful outing to Walmer Castle on 24th August



▲ Rope-making at Chatham Historic Dockyard

Lyminge Historical Society organised a very enjoyable visit to Chatham Historic Naval Dockyard on Tuesday 20th September for over 40 members and friends. They were able to see an audio-visual display of life in the Dockyard in the 1700s; a display of past Lifeboats by the R.N.L.I. and a very atmospheric and moving exhibition about RMS Titanic.

There was even an opportunity to have a go at making a length of rope in part of the famous quarter of a mile long Ropery. This is still making ropes commercially. Many members were able to take a tour of the destroyer, HMS Cavalier, the submarine, HMS Ocelot and HMS Gannet

A piece of the actual rope ! ➡



HMS Cavalier ➡



◀ Mystery Photo

Last month's picture was part of the heading on the Lyminge Association's notice board in the main car park. Have a go at this month's picture...